

SR800 (A593)

## PARTS CATALOG

### INTRODUCTION

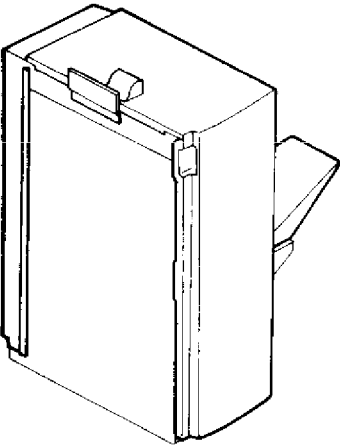
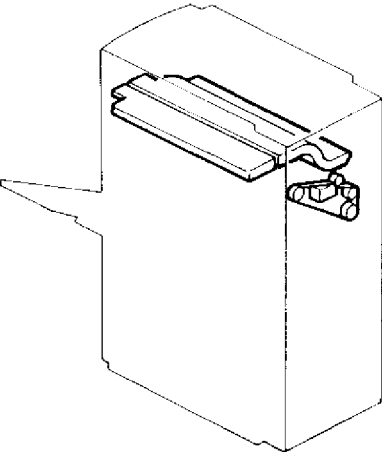
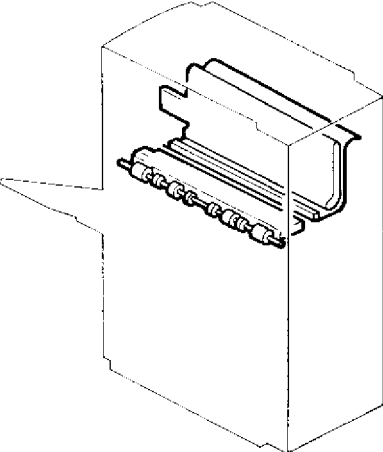
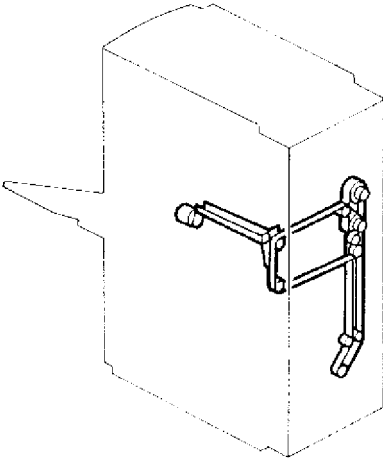
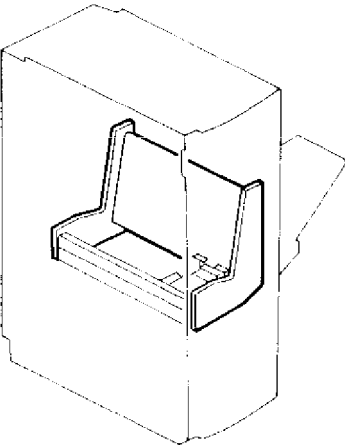
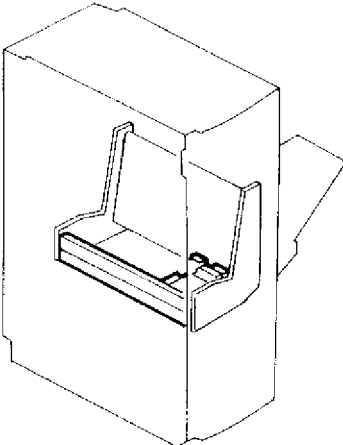
This chapter instructs you the numbers and names of parts on this machine.

### INDEX to PARTS CATALOG

<b>Location of Unit .....</b>	<b>3</b>
1.Exterior (A593) .....	4
2.Upper Paper Feed Section (A593) .....	6
3.Lower Paper Feed Section (A593) .....	8
4.Paper Registration (A593) .....	10
5.Transport Unit (A593) .....	12
6.Stapler Unit (A593) .....	14
7.Paper Exit Section (A593) .....	16
8.Shift Tray Section 1 (A593) .....	18
9.Shift Tray Section 2 (A593) .....	20
10.Electrical Section (A593) .....	22
11.Main Control Board (A593) .....	24
12.Stapler Harness (A593) .....	28
13.Decal and Document (A593) .....	30
<b>Parts Index .....</b>	<b>33</b>

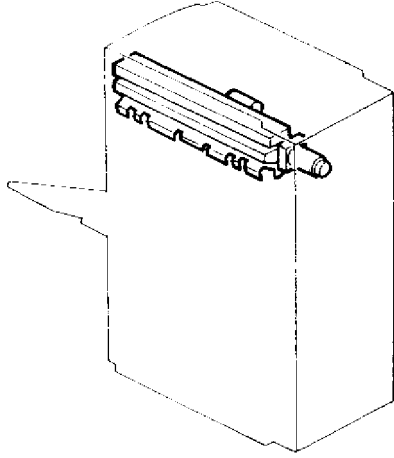
February,15'96

# Location of Unit

<p>1. Exterior (A593)</p>  <p>See Page 4</p>	<p>2. Upper Paper Feed Section (A593)</p>  <p>See Page 6</p>	<p>3. Lower Paper Feed Section (A593)</p>  <p>See Page 8</p>
<p>4. Paper Registration (A593)</p>  <p>See Page 10</p>	<p>5. Transport Unit (A593)</p>  <p>See Page 12</p>	<p>6. Stapler Unit (A593)</p>  <p>See Page 14</p>

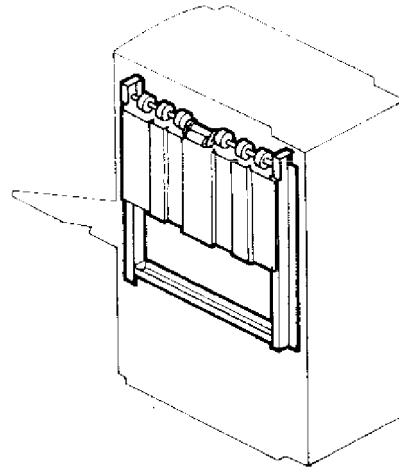
## Location of Unit

7. Paper Exit Section (A593)



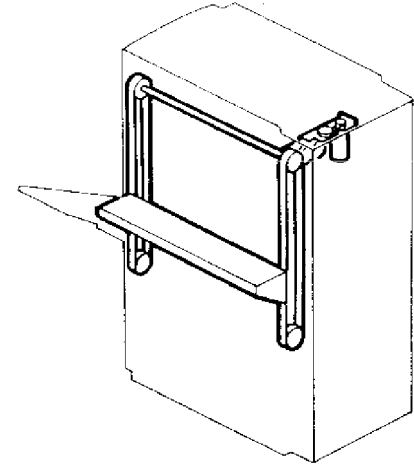
See Page 16

8. Shift Tray Section 1 (A593)



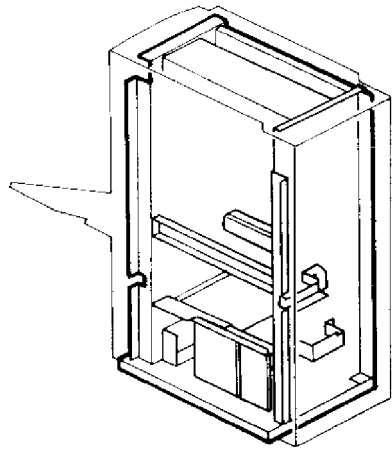
See Page 18

9. Shift Tray Section 2 (A593)



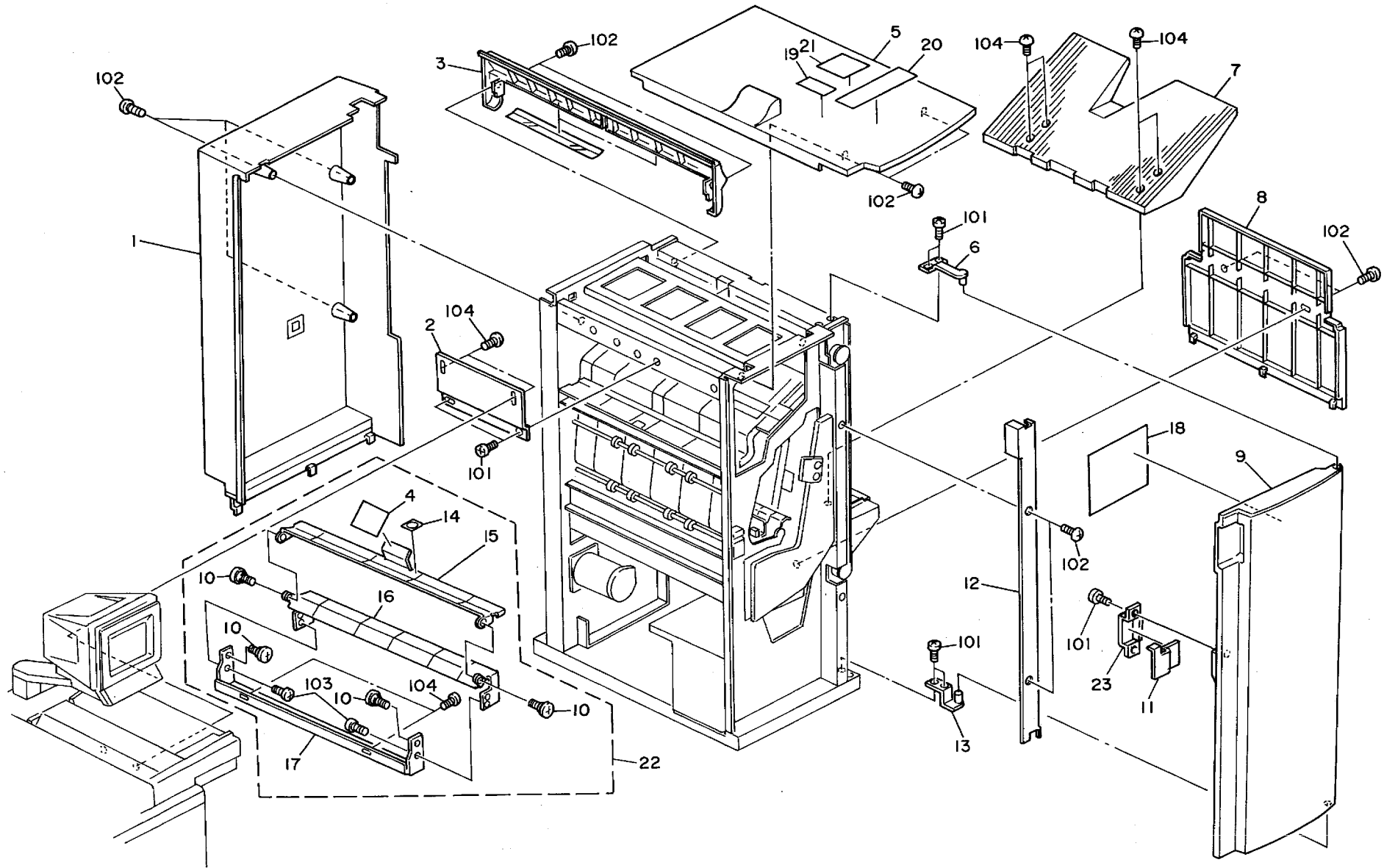
See Page 20

10. Electrical Section (A593)




See Page 22

# 1. Exterior (A593)



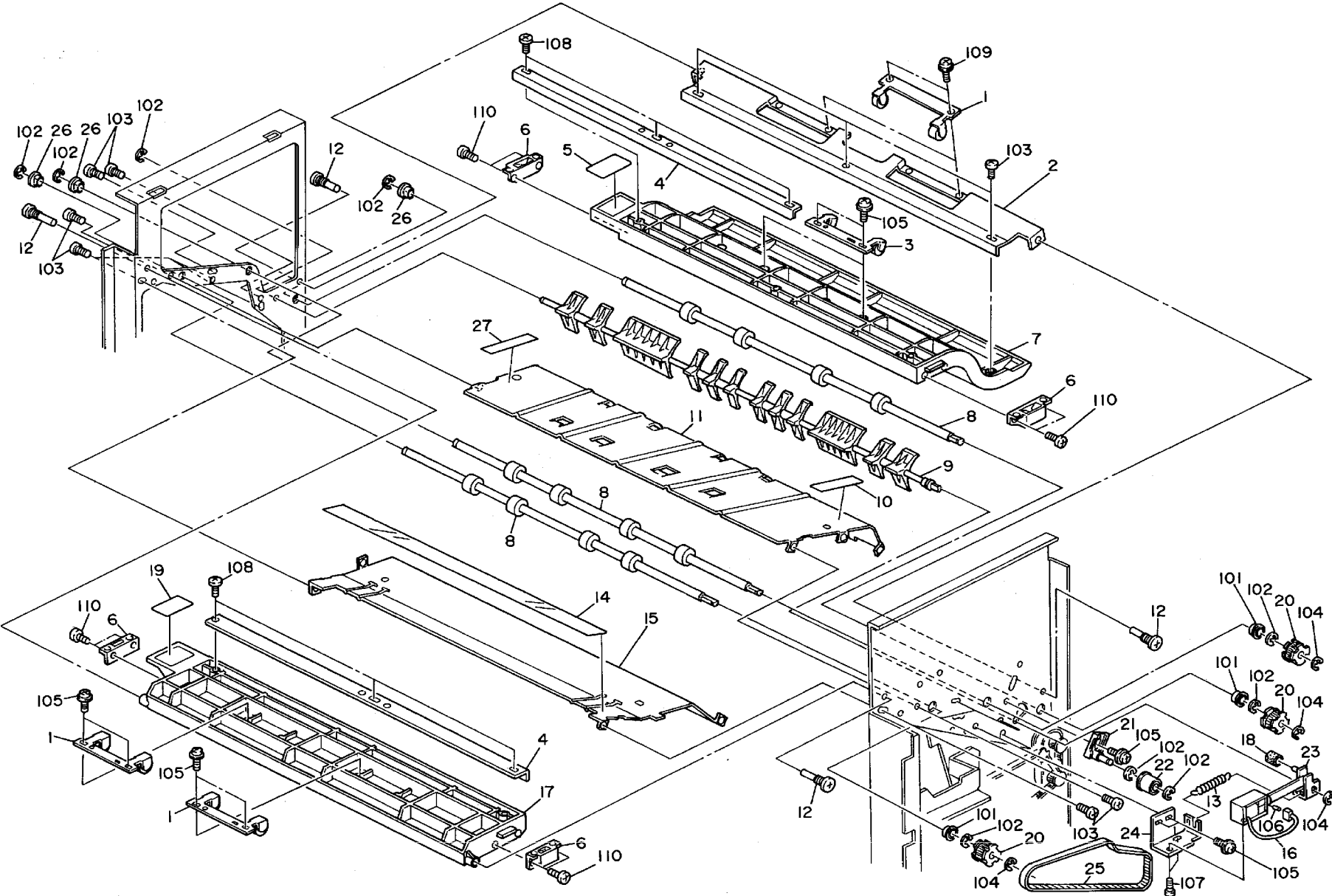
## 1. Exterior (A593)

Index No.	Part No.	Description	Q'ty Per Assembly
1	A353 4245	Rear Cover	1
2	A353 4611	Upper Joint Bracket	1
3	A353 4225	Right Upper Cover	1
4	A353 2245	Guide Plate Seal	1
5	A353 4255	Upper Cover	1
6	A353 1171	Upper Door Bracket	1
7	A353 3245	Shift Tray	1
8	A353 4215	Right Cover	1
9	A353 4265	Front Door	1
10	5403 2075	Stepped Screw	1
11	A353 4311	Safety Switch Actuator	1
12	A353 4235	Front Shift Cover	1
13	A353 1161	Lower Door Bracket	1
14	A353 4604	Decal - R	1
15	A353 4603	Upper Relay Guide	1
16	A353 4602	Lower Relay Guide	1
17	A353 4601	Relay guide Bracket	1
18	A593 4917	Decal - Misfeed Removal	1
19	A353 4995	Decal - Staple Position	1
20	A593 4981	Decal - Set CFF	1
21	A353 4975	Decal - Exit	1
22	A353 4600	Relay Guide	1
23	A353 4312	Door Catch	1



Index No.	Part No.	Description	Q'ty Per Assembly
101	0434 0060B	Philips Tapping Screw - M4x6	
102	0344 0060F	Philips Truss Head Screw - M4x6	
103	0951 4006B	Philips Screw with Flat Washer - M4x6	
104	0344 0080F	Philips Truss Head Screw - M4x8	

# 2. Upper Paper Feed Section (A593)



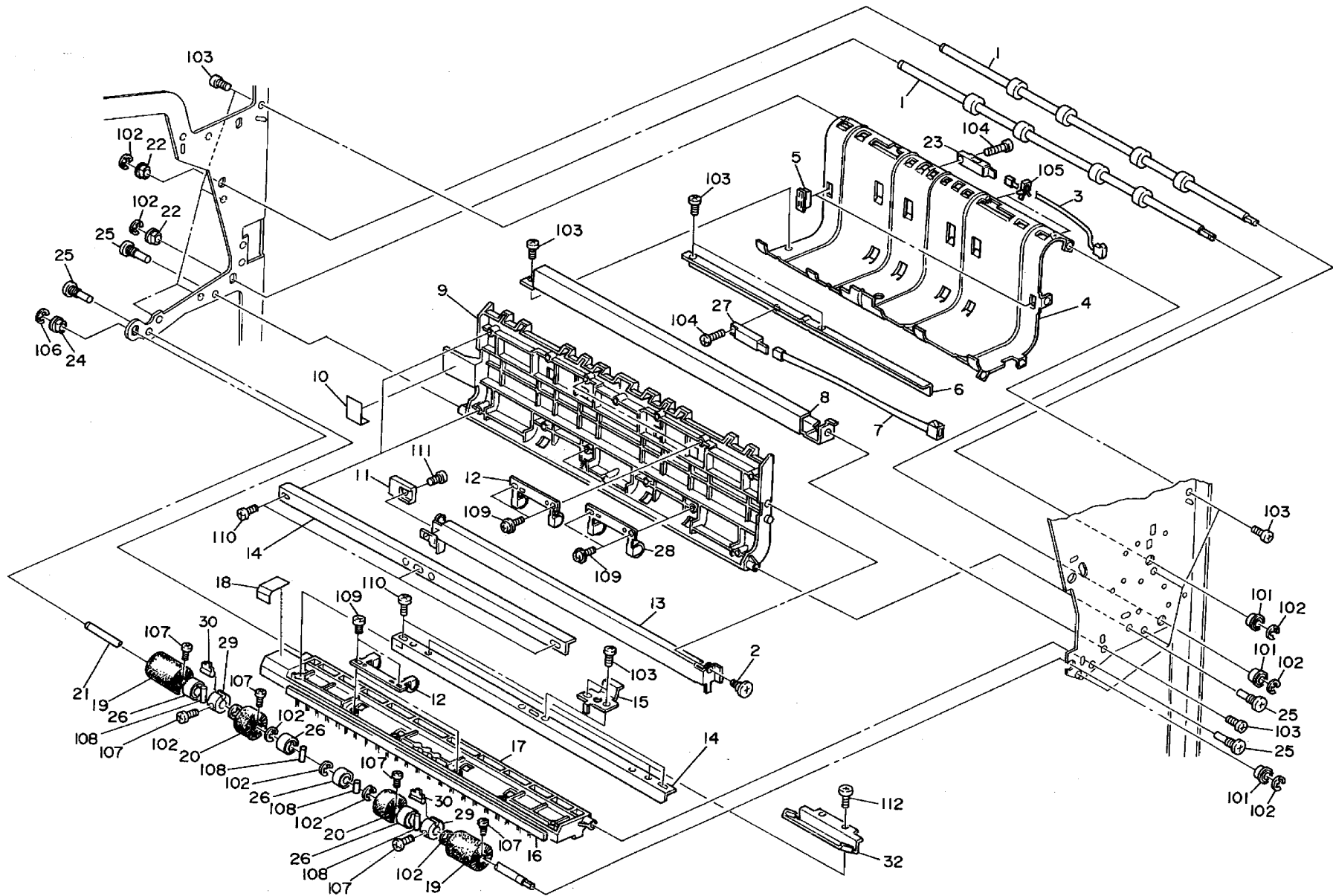
## 2. Upper Paper Feed Section (A593)

Index No.	Part No.	Description	Q'ty Per Assembly
1	A353 2301	Paper Guide Roller	4
2	A353 2262	Removal Guide Support Plate	1
3	A353 2321	Paper Guide Roller	2
4	A353 2244	Support Angle	1
5	A353 2265	Decal- R1	1
6	AG07 0004	Magnetic Catch	4
7	A353 2261	Upper Removal Guide - R1	1
8	A353 2101	Transport Roller	3
9	A353 2131	Junction Gate	1
10	A353 2224	Rear Seal	1
11	A353 2221	Upper Guide Plate	1
12	AA14 3215	Screw - M5x6	4
13	A353 2147	Junction Gate Spring	1
14	A353 2232	Paper Guide Sheet	1
15	A353 2231	Exit Turn Guide Plate	1
16	AX12 0027	Solenoid - DC 24V	1
17	A353 2271	Upper Removal guide - R2	1
18	A458 2251	Cushion - Bin Solenoid Lever	1
19	A353 2275	Decal - R2	1
20	AB03 0374	Timing Pulley - 20Z	3
21	A353 1651	Lower Tightener	1
22	A458 3281	Idler Roller	1
23	A353 2141	Solenoid Lever	1
24	A353 2146	Solenoid Bracket	1
25	AA04 3058	Timing Belt - 588PX	1
26	5304 1639	Bushing - 8mm	3
27	A353 2223	Front Seat	1

Index No.	Part No.	Description	Q'ty Per Assembly
101	0742 3808	Ball Bearing - 8x16	
102	0720 0060E	Retaining Ring - M6	
103	0434 0060B	Philips Tapping Screw - M4x6	
104	0720 0040E	Retaining Ring - M4	
105	0951 4006B	Philips Screw with Flat Washer - M4x6	
106	0622 0140E	Spring Hole Pin - 2x14mm	
107	0313 0040B	Philips Pan Head Screw - M3x4	
108	0414 0082B	Binding Self Tapping Screw - M4x8	
109	0314 0040B	Philips Pan Head Screw - M4x4	
110	0353 0050B	Philips Truss Head Screw M3x5	



### 3. Lower Paper Feed Section (A593)

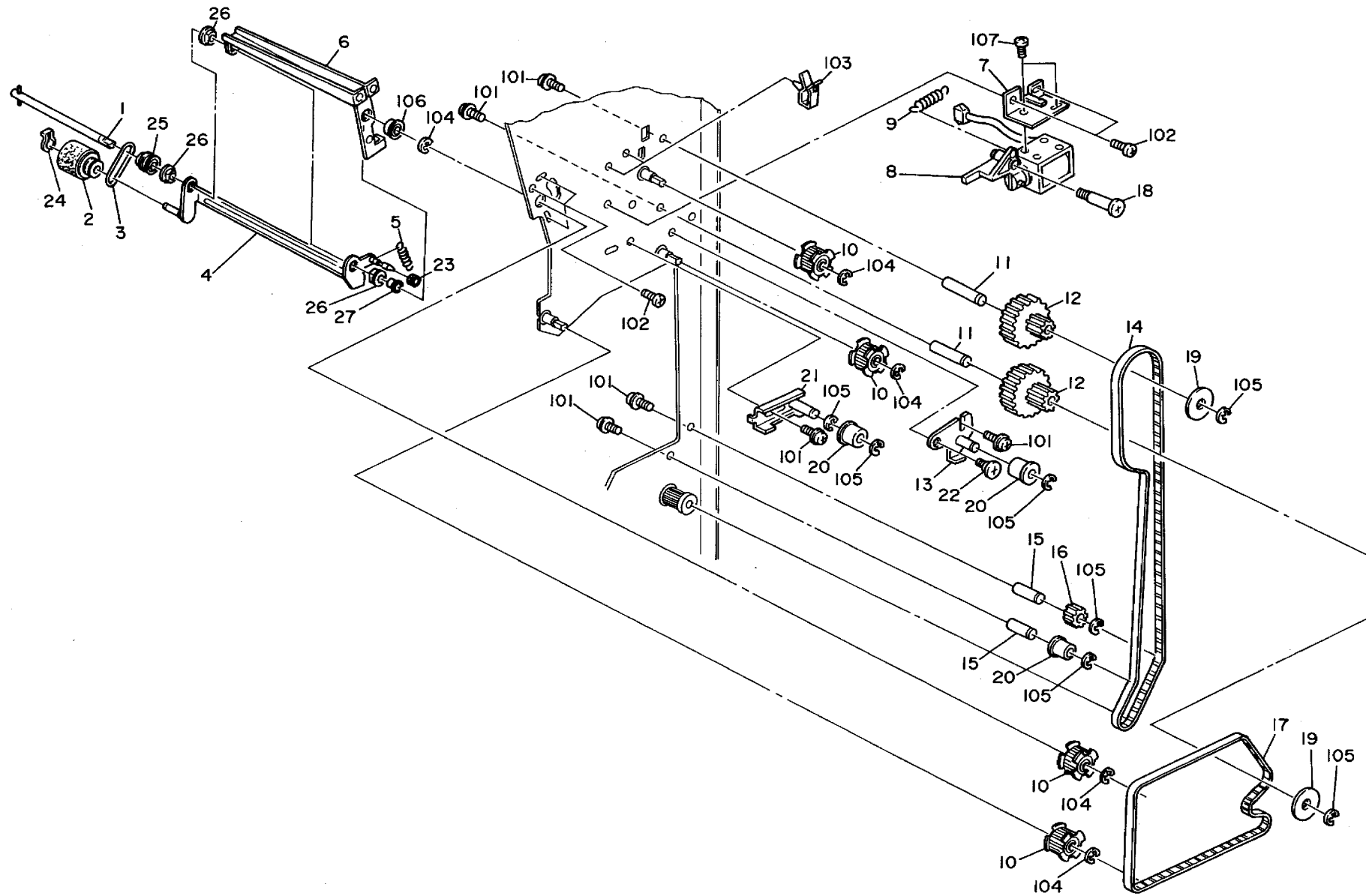


### 3. Lower Paper Feed Section (A593)

Index No.	Part No.	Description	Q'ty Per Assembly
1	A353 2101	Transport Roller	2
2	5403 2075	Stepped Screw	1
3	A353 5255	Relay Harness - S1	1
4	A353 2201	Lower Paper Guide Plate	1
5	A420 3699	Magnet Catch Ass'y	2
6	A353 2212	Sensor Bracket	1
7	A593 5256	Joger Sensor Harness	1
8	A353 2211	Middle Guide Plate	1
9	A353 2241	Lower Removal Guide - R3	1
10	A353 2245	Guide Plate Seal	1
11	A353 2243	Lever Knob	1
12	A353 2301	Paper Guide Roller	4
13	A353 2242	Magnetic Release Lever	1
14	A353 2244	Support Angle	3
15	A353 2252	Pressure Spring Plate	1
16	A028 7479	Antistatic Brush	1
17	A353 2251	Exit Removal Guide - R4	1
18	A353 2255	Decal - R4	1
19	A353 2122	Alignment Brush Roller - Long	2
20	A353 2121	Alignment Brush Roller - Short	2
21	A353 2111	Exit Roller Shaft	1
22	5304 1639	Bushing - 8mm	2
23	A010 5700	Sensor	1
24	5053 0447	Bushing - 6mm	1
25	AA14 3215	Screw - M5x6	4
26	A353 2112	Exit Roller	4
27	AW01 0025	Photosensor	1
28	A353 2311	Paper Guide Roller	2
29	A353 2115	Paddle Roller	2
30	A353 2116	Paddle	2
31	A353 2110	Brush Roller Ass'y	1
32	A593 2910	Exit Guide bracket	2

Index No.	Part No.	Description	Q'ty Per Assembly
101	0742 3808	Ball Bearing - 8x16	
102	0720 0060E	Retaining Ring - M6	
103	0434 0060B	Philips Tapping Screw - M4x6	
104	0313 0100B	Philips Pan Head Screw - M3x10	
105	1105 0283	Clamp	
106	0720 0040E	Retaining Ring - M4	
107	0313 0060B	Philips Pan Head Screw - M3x6	
108	0632 0120G	Parallel Pin - 2x12	
109	0951 4006B	Philips Screw with Flat Washer - M4x6	
110	0414 0082B	Binding Self Tapping Screw - M4x8	
111	0313 0040B	Philips Pan Head Screw - M3x4	
112	0951 3005B	Philips Screw With Flat Washer M3x5	

## 4. Paper Registration (A593)

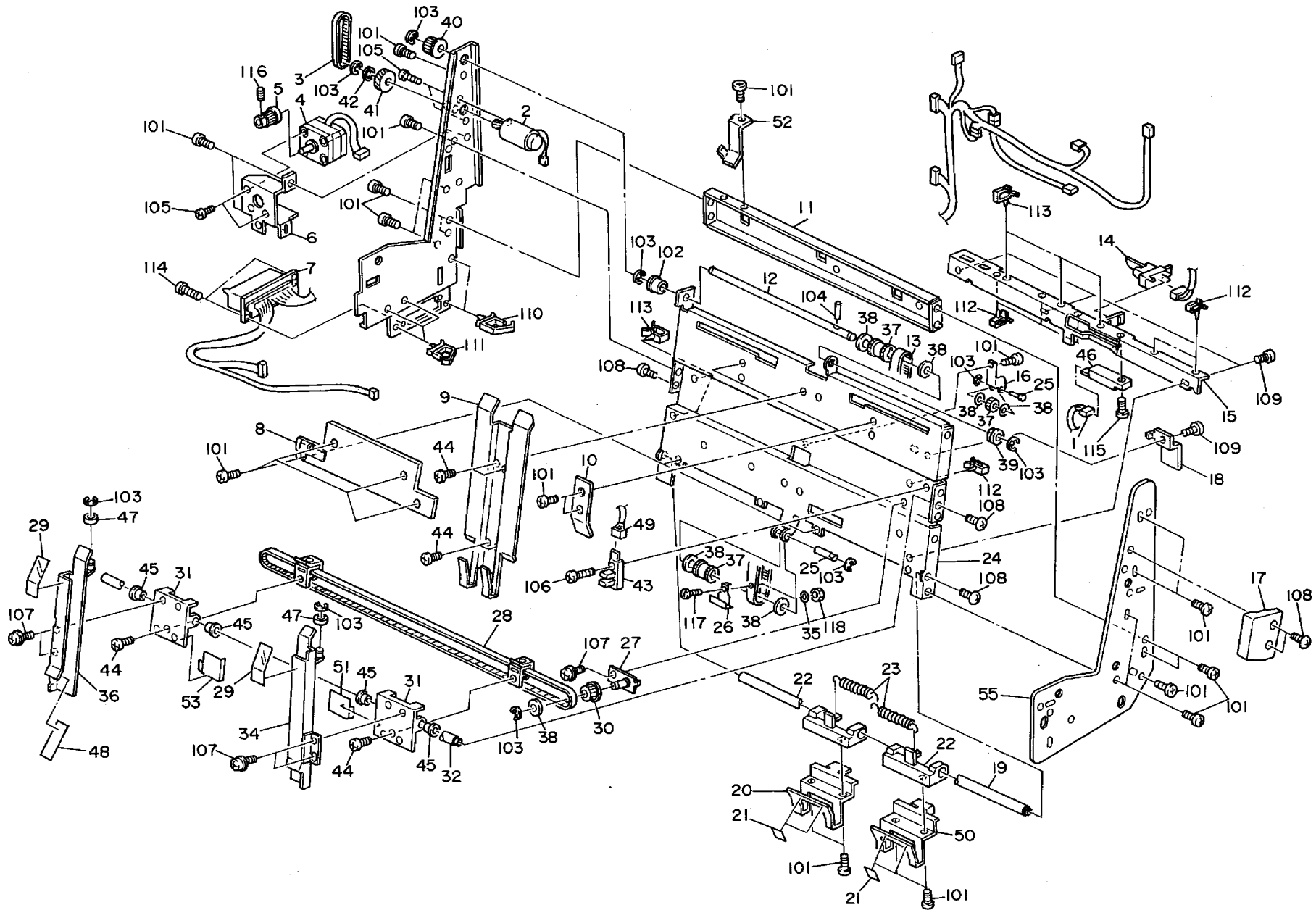


#### 4. Paper Registration (A593)

Index No.	Part No.	Description	Q'ty Per Assembly
1	A353 2155	Positioning Roller Shaft	1
2	5206 2671	Positioning Roller	1
3	5919 2132	Positioning Roller Belt	1
4	A353 2151	Positioning Roller Arm	1
5	A353 2157	Pressure Spring	1
6	A353 2156	Positioning roller Bracket	1
7	A353 2162	Solenoid Bracket	1
8	A353 2160	Positioning Roller Solenoid	1
9	A353 2163	Release Spring	1
10	AB03 0374	Timing Pulley - 20Z	4
11	A353 1142	Idler Shaft	2
12	AB03 3043	Timing Pulley - 44/18Z	2
13	A353 1631	Main Tightener	1
14	AA04 3028	Timing Belt - 852P3M6	1
15	A353 1143	Idler Shaft	2
16	AB03 0373	Timing Pulley - 22Z	1
17	AA04 3180	Timing Belt - B60S3M564	1
18	A300 3858	Stepped Screw - M4	1
19	A017 2988	Ring	2
20	A458 3281	Idler Roller	3
21	A353 1651	Lower Tightener	1
22	5442 2117	Shoulder Screw - Hinge	1
23	A458 2251	Cushion - Bin Solenoid Lever	1
24	5447 2681	Snap Ring	1
25	5919 2127	Positioning Roller Pulley	1
26	5053 0447	Bushing - 6mm	3
27	H002 2225	Bushing - Lock Release	1

Index No.	Part No.	Description	Q'ty Per Assembly
101	0951 4006B	Philips Screw with Flat Washer - M4x6	
102	0434 0060B	Philips Tapping Screw - M4x6	
103	1105 0200	Clamp	
104	0720 0040E	Retaining Ring - M4	
105	0720 0060E	Retaining Ring - M6	
106	0741 3506	Ball Bearing - 6x12x4 mm	
107	0313 0040B	Philips Pan Head Screw - M3x4	

# 5. Transport Unit (A593)



## 5. Transport Unit (A593)

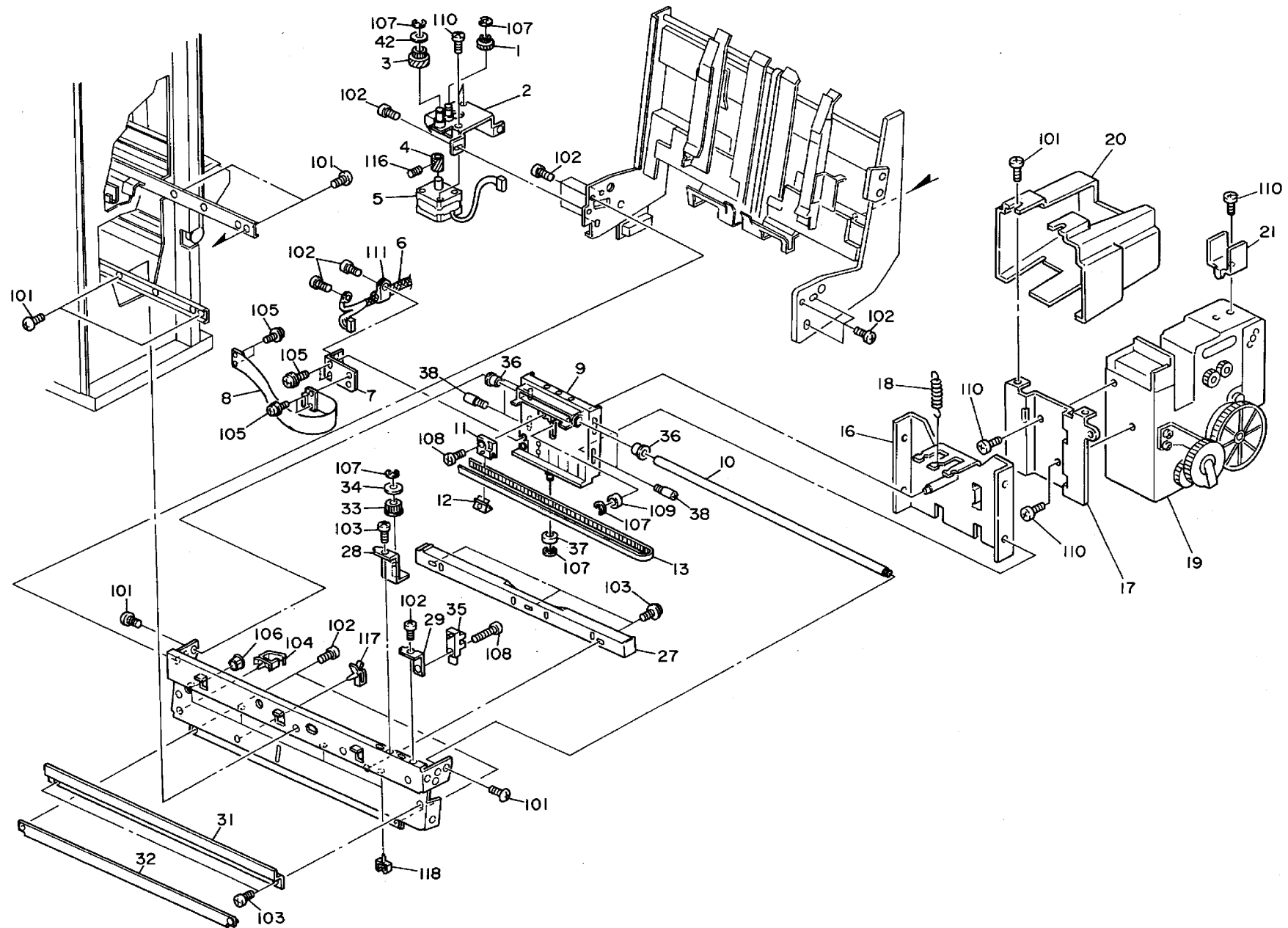
Index No.	Part No.	Description	Q'ty Per Assembly
1	A353 5215	Relay Harness - S3	1
2	A409 1234	Exit Motor - DC 9W	1
3	AA04 3104	Timing Belt - 219 P3M4	1
4	AX06 0066	Stepping Motor - DC 4W	1
5	AB03 0382	Timing Pulley - 24Z	1
6	A353 2622	Jogger Motor Barcket	1
7	A593 5210	Stapler Tray Harness	1
8	A353 2773	Lower Positioning Guide	1
9	A353 2771	Positing Guide Plate	1
10	A353 2774	Upper Positioning Guide	2
11	A353 2637	Slide Rail Stay	1
12	A353 2795	Exit Drive Shaft	1
13	A353 2764	Timing Belt - 2x710	1
14	AW02 0049	Photointerruptor - OS - 580213-703	1
15	A353 2772	Positioning Sensor Bracket	1
16	A300 3815	Spring Plate	1
17	A300 3551	Glip Stapler Unit	1
18	A353 2571	Sensor Cover	1
19	A353 2741	Guide Rod	1
20	A353 2786	Rear Positioning Fence	1
21	A353 2782	Positioning Fence Seal	4
22	A353 2783	Slide Holder	2
23	A353 2788	Slide Holder Spring	2
24	A353 2705	Transport Base Plate	1
25	A300 3813	Shaft - 6x21.5	1
26	A353 2761	Paper Exit Pawl	1
27	A353 2751	Idler Bracket	1
28	A353 2790	Timing Belt - 1242P2M4	1
29	A353 2716	Jogger Fence Seal	2
30	AB03 0227	Pulley - 32Z	1
31	A353 2731	Jogger Fence Slider	2
32	A353 2741	Guide Rod	1
34	A353 2711	Front Jogger Fence	1
35	A353 2763	Washer - M5	1
36	A353 2721	Rear Jogger Fence	1

Index No.	Part No.	Description	Q'ty Per Assembly
37	AB03 0229	Timing Pulley - 20Z	3
38	A300 3812	Spacer - 6x22x1.5	7
39	5053 0447	Bushing - 6mm	1
40	AB03 0030	Pulley - 17Z	1
41	AB01 0055	Gear - 46Z/13Z	1
42	A300 3822	Spacer - 11x15x1	1
43	AW02 0041	Photointerruptor	1
44	5875 2088	Shoulder Screw - M4	6
45	A353 2732	Bushing - 8x10x9.5mm	4
46	A010 5700	Sensor	1
47	A353 3291	Lift guide Roller	2
48	A353 2717	Mylar - 29x29x0.3	1
49	A593 5216	Exit Sensor Harness	1
50	A353 2781	Front Positioning Fence	1
51	A353 2737	Front Slider Seal	1
52	A353 2636	Sensor Cover	1
53	A353 2738	Rear Side Seal	1
55	A353 2601	Staple Unit Side Plate	1

Index No.	Part No.	Description	Q'ty Per Assembly
101	0434 0060B	Philips Tapping Screw - M4x6	
102	0805 3145	Ball Bearing - 6x12x4mm	
103	0720 0040E	Retaining Ring - M4	
104	0632 0120G	Parallel Pin - 2x12	
105	0313 0040B	Philips Pan Head Screw - M3x4	
106	0314 0100B	Philips Pan Head Screw - M4x10	
107	0951 4006B	Philips Screw with Flat Washer - M4x6	
108	0344 0060F	Philips Truss Head Screw - M4x6	
109	0314 0040B	Philips Pan Head Screw - M4x4	
110	1105 0291	Wire Saddle	
111	1105 0310	Wire Clamp	
112	1105 0283	Clamp	
113	1105 0200	Clamp	
114	0313 0060B	Philips Pan Head Screw - M3x6	
115	0313 0100B	Philips Pan Head Screw - M3x10	
116	0574 0040E	Hexagon Headless Set Screw - M4x4	
117	0242 0040Z	Pan Head Screw - M2x4	
118	0710 0020W	Hexagonal Nut - M2	

Index No.	Part No.	Description	Q'ty Per Assembly

## 6. Stapler Unit (A593)



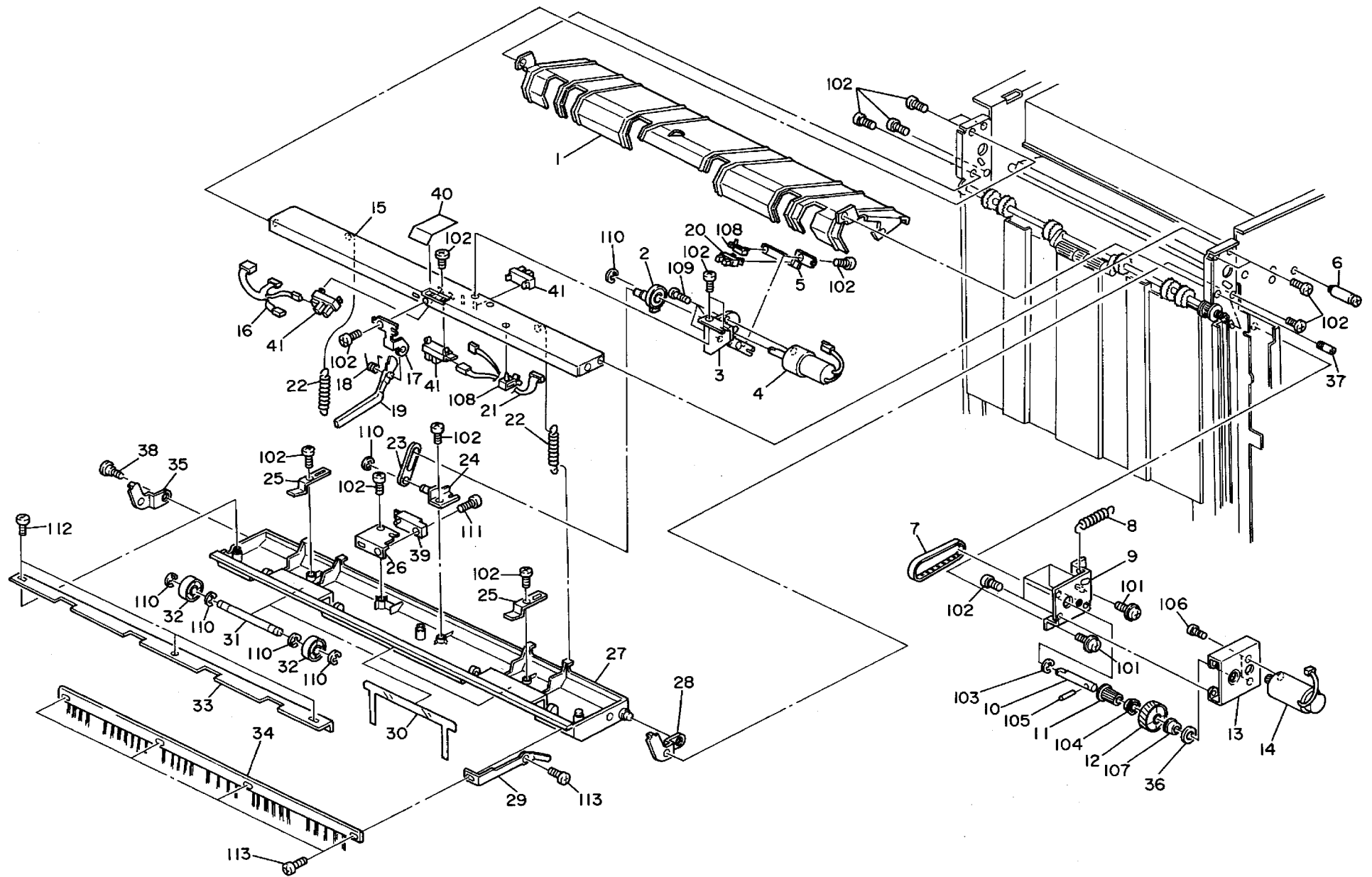


## 6. Stapler Unit (A593)

Index No.	Part No.	Description	Q'ty Per Assembly
1	AB01 1085	Gear - 14Z/31Z	1
2	A353 2621	Stapler Motor Bracket	1
3	AB03 3028	Pulley - 32Z/31Z	1
4	AB01 1141	Gear - 14Z	1
5	AX06 0066	Stepping Motor - DC 4W	1
6	A593 5260	Relay Harness	1
7	A353 2833	Grounding Plate	1
8	A593 5300	Stapler Harness	1
9	A353 2831	Stapler Slide Holder	1
10	A353 2812	Guide Rod	1
11	A353 2821	Belt Clamp	1
12	A300 3634	Spring Plate - Timing Belt	1
13	AA04 3179	Timing Belt - 1182P2M4	1
15	A353 2853	Holder Stay	1
16	A593 2911	Stapler Slide Bracket	1
17	A593 2914	Stapler Bracket	1
18	A353 2851	Return Spring	2
19	AJ01 1010	Stapler - EH-560	1
20	A593 2916	Stapler Cover	1
21	A593 2915	Slide Endfence Lever	1
27	A353 2811	Stapler Guide Rail	1
28	A353 2815	Idler Bracket	1
29	A353 2813	Stapler HP Sensor Bracket	1
30	A300 3812	Spacer - 6x22x1.5	1
31	A353 2817	Harness Cover	1
32	A353 2825	Stapler Slide Guide	1
33	AB03 0227	Pulley - 32Z	1
34	A300 3812	Spacer - 6x22x1.5	1
35	AW02 0041	Photointerruptor	1
36	A353 2832	Grounding Plate	2
37	5446 1687	Lower Roller - Scanner Guide	1
38	5206 2687	Stud Screw - M3	4
40	A351 3143	Bushing EO - 12N 22mm	1

Index No.	Part No.	Description	Q'ty Per Assembly
101	0344 0060F	Philips Truss Head Screw - M4x6	
102	0434 0060B	Philips Tapping Screw - M4x6	
103	0951 4006B	Philips Screw with Flat Washer - M4x6	
104	1105 0283	Clamp	
105	0951 3006B	Philips Screw with Flat Washer - M3x6	
106	1106 0193	Bushing - 7.9mm	
107	0720 0040E	Retaining Ring - M4	
108	0314 0100B	Philips Pan Head Screw - M4x10	
109	0740 3905	Bushing 5X13x4mm	
110	0313 0040B	Philips Pan Head Screw - M3x4	
111	1105 0375	Nylon Clamp	
116	0574 0040E	Hexagon Headless Set Screw - M4x4	
117	1105 0200	Clamp	
118	1105 0193	Clamp	

## 7. Paper Exit Section (A593)

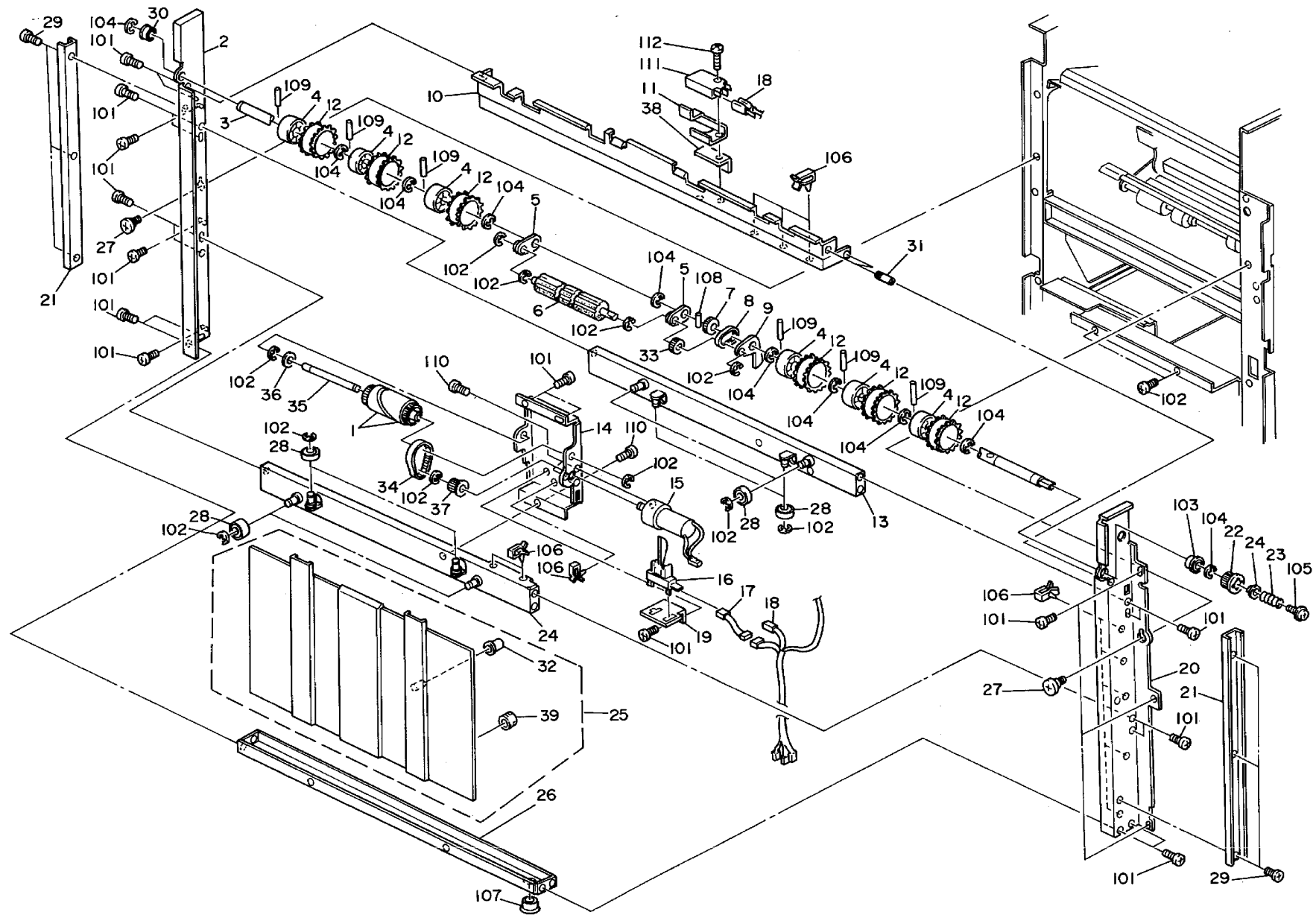


## 7. Paper Exit Section (A593)

Index No.	Part No.	Description	Q'ty Per Assembly
1	A353 3421	Lower Exit Guide Plate	1
2	A353 3381	Exit Guide Pulley	1
3	A353 3391	Motor Bracket	1
4	AX05 0055	DC Motor - DC 9W	1
5	A353 3392	Lower Sensor Bracket	1
6	5403 1910	Spring Anchor - Stopper Lever	1
7	AA04 3182	Timing Belt - 180P2M6	1
8	AA06 0092	Release Spring	1
9	A353 3313	Shift Drive Shaft Holder	1
10	A409 1195	Exit Drive Shaft	1
11	AB03 0380	Timing Pulley - 15Z	1
12	AB01 0083	Gear - 62Z	1
13	A353 3312	Motor Bracket	1
14	A409 1234	Exit Motor - DC 9W	1
15	A353 3180	Upper Exit Stay	1
16	A353 5225	Relay Harness - S4	1
17	A353 3172	Actuator Bracket	1
18	A353 3173	Pressure Spring	1
19	A379 1225	Upper Sensor Actuator	1
20	AW02 0021	Photointerruptor	1
21	A353 5226	Relay Harness - S7	1
22	A353 3405	Pressure Spring	2
23	A353 3403	Driven Roller Link	1
24	A353 3361	Exit Guide Bracket	1
25	A353 3354	Driven Roller Holder	2
26	A353 3371	Exit Sensor Bracket	1
27	A353 3352	Upper Exit Guide	1
28	A353 3402	Driven Roller Rear Bracket	1
29	A353 3374	Leaf Spring	1
30	A353 3372	Release Guide Mylar	1
31	A353 3353	Driven Roller Shaft	2
32	A353 3351	Exit Driven Roller	4
33	A353 3375	Upper Guide Support Plate	1
34	A353 3373	Antistatic Brush	1
35	A353 3401	Driven Roller Bracket	1

Index No.	Part No.	Description	Q'ty Per Assembly
36	A409 1197	Spacer - 10x16x1.6mm	1
37	5410 1291	Return Lever Pin	2
38	5442 2117	Shoulder Screw - Hinge	1
39	A010 5700	Sensor	1
40	A353 3181	Exit Sensor Bracket	1
41	AW02 0006	Photointerruptor - EE-SX460-P2	3
101	0951 4006B	Philips Screw with Flat Washer - M4x6	
102	0434 0060B	Philips Tapping Screw - M4x6	
103	0720 0030E	Retaining Ring - M3	
104	0742 3905	Ball Bearing - 5 x 13 x 4 mm	
105	0632 0080G	Parallel Key - 2x8mm	
106	0313 0050B	Philips Pan Head Screw - M3x5	
107	0741 3505	Ball Bearing - 5x10x4	
108	1105 0200	Clamp	
109	0313 0040B	Philips Pan Head Screw - M3x4	
110	0720 0040E	Retaining Ring - M4	
111	0313 0100B	Philips Pan Head Screw - M3x10	
112	0414 0082B	Binding Self Tapping Screw - M4x8	
113	0985 3006B	Tapping Screw - M3x6	

# 8. Shift Tray Section 1 (A593)

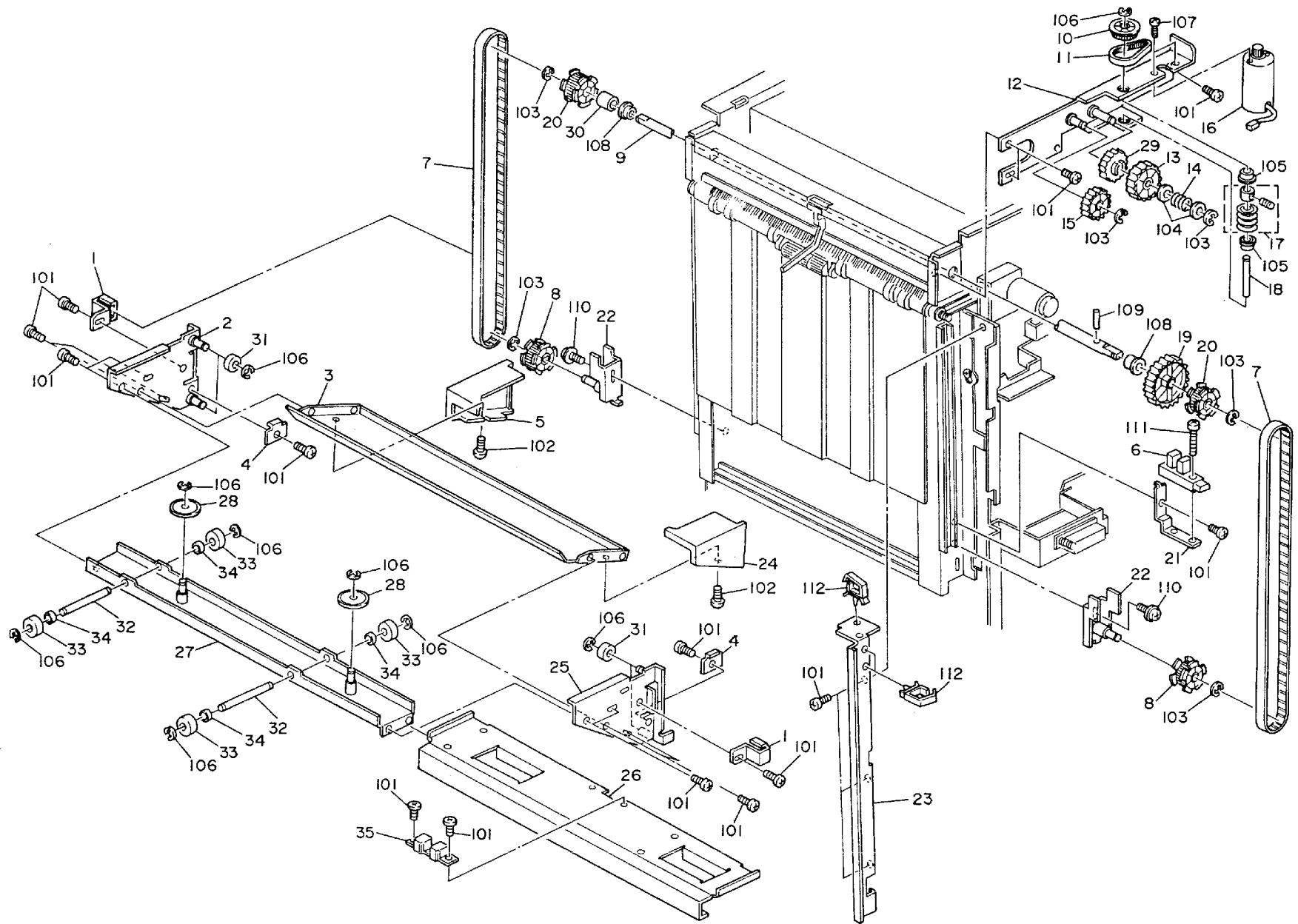


## 8. Shift Tray Section 1 (A593)

Index No.	Part No.	Description	Q'ty Per Assembly
1	A353 3341	Shift Drive Cam	2
2	A353 3432	Front Side Plate	1
3	A353 3193	Exit Roller Shaft	1
4	A353 3201	Exit Roller	6
5	A353 3192	Front Arm	2
6	A353 3191	Reverse Roller	1
7	AB03 0377	Timing Pulley - T28	1
8	AA04 3181	Timing Belt - B40S2M80	1
9	A353 3197	Rear Arm	1
10	A353 3453	EExit Roller Cover	1
11	A353 3451	Microswitch Actuator	1
12	A353 3202	Exit Roller Ring	6
13	A353 3331	Exit Stay	2
14	A353 3345	Shift Drive Motor Bracket	1
15	AX05 0055	DC Motor - DC 9W	1
16	AW02 0049	Photointerruptor - OS - 580213-703	1
17	A593 5257	Shift Sensor Harness	1
18	A353 5235	Shift Relay Harness	1
19	A353 3347	Shift Sensor Barcket	1
20	A353 3442	Rear Side Plate	1
21	A353 3433	Shift Tray Guide	2
22	AB03 0379	Timing Pulley - T30	1
23	A300 3826	Pressure Spring	1
24	A470 1703	Shift Clutch	1
25	A353 3020	End Fence	1
26	A353 3411	Lower Exit Stay	1
27	5442 2117	Shoulder Screw - Hinge	2
28	A300 2134	Guide Roller - B	8
29	5875 2088	Shoulder Screw - M4	6
30	5304 1639	Bushing - 8mm	1
31	5410 1291	Return Lever Pin	2
32	A353 3231	Bushing - 4x6x9mm	1
33	AB03 0378	Timing Pulley - 20Z	1
34	C101 1327	Timing Belt - PX146P2M	1
35	A353 3346	Shift Drive Shaft	1

Index No.	Part No.	Description	Q'ty Per Assembly
36	AA13 2024	Spacer - M6	1
37	AB03 0381	Timing Pulley - 26Z	1
38	A353 3454	Microswitch Bracket	1
39	A556 2151	Antistatic Brush	1
101	0434 0060B	Philips Tapping Screw - M4x6	
102	0720 0040E	Retaining Ring - M4	
103	0742 3808	Ball Bearing - 8x16	
104	0720 0060E	Retaining Ring - M6	
105	0951 3006B	Philips Screw with Flat Washer - M3x6	
106	1105 0200	Clamp	
107	1106 0430	Bushing - 13mm	
108	0633 0120G	Parallel Pin - 3x12	
109	0633 0120E	Spring Pin - M3x12	
110	0313 0040B	Philips Pan Head Screw - M3x4	
111	1204 1081	Microswitch	
112	0313 0120B	Philips Pan Head Screw - M3x12	

# 9. Shift Tray Section 2 (A593)

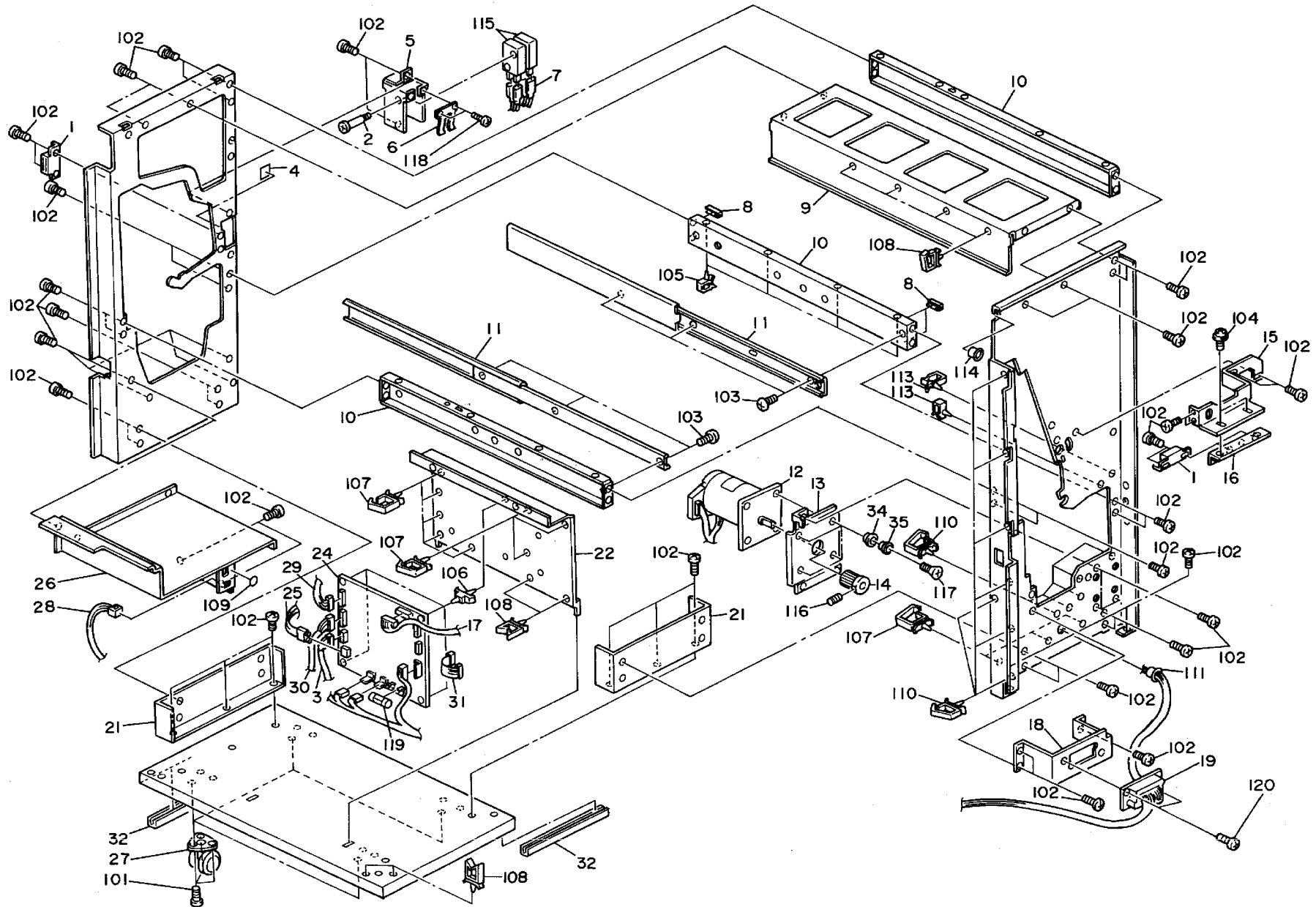


## 9. Shift Tray Section 2 (A593)

Index No.	Part No.	Description	Q'ty Per Assembly
1	A353 3134	Timing Belt Guide Plate	2
2	A353 3281	Front Side Plate	1
3	A353 3303	Shift Tray Support	1
4	A353 3292	Stopper Plate	2
5	A353 4274	Front Tray Cover	1
6	AW02 0012	Photointerruptor	1
7	AA04 3130	Timing Belt - 360T	2
8	AB03 0376	Timing Pulley - 30Z	2
9	A353 3135	Lift Drive Shaft	1
10	AB03 0223	Pulley - 48Z	1
11	AA04 3054	Timing Belt - 142 P2M4	1
12	A353 3121	Lift Drive Motor Bracket	1
13	AB01 3711	Worm Gear - 44Z	1
14	A353 3113	Pressure Spring	1
15	AB01 3710	Gear - 40Z	1
16	AX05 0058	DC Motor - 24V 9W	1
17	AB01 3709	Worm Gear	1
18	A300 2726	Worm Gear Shaft	1
19	AB01 3712	Gear - 52Z	1
20	AB03 0375	Timing Pulley - 30Z	2
21	A353 3161	Lower Sensor Bracket	1
22	A353 3151	Tightener Bracket	2
23	A353 1154	Harness Hoider Plate	1
24	A353 4284	Rear Tray Cover	1
25	A353 3301	Rear Side Plate	1
26	A353 3251	Shift Tray Holder	1
27	A353 3261	Shift Tray Base	1
28	A300 2133	Guide Roller - A	2
29	AB01 3708	Gear - 18Z	1
30	A353 3136	Spacer - 8x12x14.4	1
31	A353 3291	Lift guide Roller	4
32	A353 3271	Tray Shift Shaft	2
33	A353 3272	Guide Roller	4
34	A353 3273	Spacer - 6x10x2	4
35	A353 3252	Plate Bracket	1

Index No.	Part No.	Description	Q'ty Per Assembly
101	0434 0060B	Philips Tapping Screw - M4x6	
102	0344 0060F	Philips Truss Head Screw - M4x6	
103	0720 0060E	Retaining Ring - M6	
104	0807 5056	Washer - 8.1mm	
105	0741 3506	Ball Bearing - 6x12x4 mm	
106	0720 0040E	Retaining Ring - M4	
107	0313 0040B	Philips Pan Head Screw - M3x4	
108	0742 3808	Ball Bearing - 8x16	
109	0633 0140E	Parallel Pin - 3x14	
110	0951 4006B	Philips Screw with Flat Washer - M4x6	
111	0313 0100B	Philips Pan Head Screw - M3x10	
112	1105 0310	Wire Clamp	

# 10. Electrical Section (A593)





## 10. Electrical Section (A593)

Index No.	Part No.	Description	Q'ty Per Assembly
1	AG07 0004	Magnetic Catch	1
2	A300 3155	Stepped Screw - M25x32	1
3	A593 5240	Solenoid Relay Harness	1
4	A353 2246	Decal - R3	1
5	A300 3153	Safety Switch Bracket	1
6	A300 3154	Spring Plate	1
7	A353 5270	Safety Switch Harness	1
8	A351 3143	Bushing EO-12N 22mm	3
9	A353 1153	Upper Stay	1
10	A353 1151	Slide Rail Support Plate	3
11	A353 1152	Slide Rail	2
12	AX06 0065	Motor - DC 29W	1
13	A353 1601	Transport Drive Bracket	1
14	AB03 0372	Timing Pulley - 20Z	1
15	A353 1156	Joint Magnetic Bracket	1
16	A353 1158	Upper Magnetic Bracket	1
17	A353 5250	Sensor Relay Harness	1
18	A353 1157	Joint Connector Bracket	1
19	A593 5200	Main Harness	1
21	A353 1121	Fixing Plate	2
22	A353 1181	Main Control Board Bracket	1
23	A353 5550	Motor Control Board	1
24	A593 5510	Main Control Board	1
25	AW03 0023	Optical Fiber	1
26	A353 1155	Lower Inner Cover	1
27	AH01 2010	Caster - 50m	4
28	A353 5295	I/F Harness	1
29	A353 5220	Tray Relay Harness	1
30	A353 5230	Motor Relay Harness	1
31	A353 5280	Main Motor Harness	1
32	A353 1192	Bushing - 12x200	2
34	A351 4721	Drive Motor Grommet	4
35	A351 4211	Anti-vibration Collar	4

Index No.	Part No.	Description	Q'ty Per Assembly
101	0315 0080B	Philips Pan Head Screw - M5x8	
102	0434 0060B	Philips Tapping Screw - M4x6	
103	0344 0060F	Philips Truss Head Screw - M4x6	
104	0951 4006B	Philips Screw with Flat Washer - M4x6	
105	1105 0200	Clamp	
106	1105 0193	Nylon Stud	
107	1105 0291	Wire Saddle	
108	1105 0316	Clamp	
109	1005 0355	Earth Mark	
110	1105 0310	Wire Clamp	
111	1106 0430	Bushing - 13mm	
112	1105 0283	Clamp	
113	1105 0200	Clamp	
114	1106 0241	Bushing - 6.7mm	
115	1204 2188	Interlock Switch	
116	0574 0040E	Hexagon Headless Set Screw - M4x4	
117	0324 0120B	Philips Sunk Screw - M4x12	
118	0313 0040B	Philips Pan Head Screw - M3x4	
119	1107 0752	Fuse - 5A 250V	
120	0353 0080B	Screw - M3X8	



## 11. Main Control Board (A593)

### CAPACITOR

SYMBOL NO.	INDEX NO.	SYMBOL NO.	INDEX NO.	SYMBOL NO.	INDEX NO.	SYMBOL NO.	INDEX NO.	SYMBOL NO.	INDEX NO.	SYMBOL NO.	INDEX NO.		
C100	147	C110	174	C154	178	C164	178	C174	179	C184	179	C194	179
C101	147	C111	172	C155	178	C165	178	C175	179	C185	178	C195	179
C102	176	C112	174	C156	178	C166	178	C176	178	C186	179	C196	179
C103	175	C113	175	C157	179	C167	178	C177	178	C187	178	C197	178
C104	147	C114	174	C158	179	C168	178	C178	178	C188	179	C198	178
C105	175	C115	174	C159	178	C169	178	C179	178	C189	178	C199	178
C106	147	C150	179	C160	179	C170	177	C180	179	C190	179	C200	178
C107	176	C151	179	C161	179	C171	179	C181	179	C191	179	C201	178
C108	173	C152	179	C162	178	C172	179	C182	179	C192	178	C202	178
C109	173	C153	178	C163	178	C173	179	C183	178	C193	179	C203	179

### CONECTOR

SYMBOL NO.	INDEX NO.	SYMBOL NO.	INDEX NO.	SYMBOL NO.	INDEX NO.	SYMBOL NO.	INDEX NO.	SYMBOL NO.	INDEX NO.	SYMBOL NO.	INDEX NO.		
C204	146	C214	179	C224	179	CN101	163	CN111	104	D100	124	DPS100	116
C205	179	C215	178	C225	178	CN102	107			D101	125	DPS101	116
C206	179	C216	179	C226	178	CN103	102			D102	125		
C207	179	C217	179			CN104	109			D103	125		
C208	178	C218	177			CN105	111						
C209	179	C219	179			CN106	108						
C210	179	C220	179			CN107	106						
C211	179	C221	179			CN108	110						
C212	179	C222	179			CN109	112						
C213	179	C223	179			CN110	105						

# 11. Main Control Board (A593)

## FUSE

SYMBOL NO.	INDEX NO.
FU100	114

## IC

SYMBOL NO.	INDEX NO.
IC100	134
IC101	1
(SOCKET)	3
IC102	128
IC103	139
IC104	135
IC105	133
IC106	2
IC107	129
IC108	129
IC109	132

SYMBOL NO.	INDEX NO.
IC110	131
IC111	127
IC112	127
IC113	137
IC114	137
IC115	140
IC116	140
IC117	130
IC118	136
IC119	141

SYMBOL NO.	INDEX NO.
IC120	141
IC121	142
IC122	142
IC123	143
IC124	138
IC125	138

## OSC

SYMBOL NO.	INDEX NO.
OSC100	144
OSC101	145

## PC

SYMBOL NO.	INDEX NO.
PC100	126

## Q

SYMBOL NO.	INDEX NO.
Q100	119
Q101	118
Q102	121
Q103	120
Q104	118
Q105	121
Q106	120
Q107	122
Q108	117

## RESISTOR

SYMBOL NO.	INDEX NO.
R100	148
R101	149
R102	160
R103	159
R104	159
R105	159
R106	164
R107	164
R108	151
R109	151

SYMBOL NO.	INDEX NO.
R110	151
R111	157
R112	164
R113	151
R114	151
R115	164
R116	164
R117	164
R118	164
R119	160

SYMBOL NO.	INDEX NO.
R120	154
R121	156
R122	151
R123	154
R124	165
R125	164
R126	170
R127	162
R128	160
R129	160

SYMBOL NO.	INDEX NO.
R130	160
R131	160
R132	160
R133	160
R134	160
R135	160
R136	159
R137	159
R138	159
R139	159

SYMBOL NO.	INDEX NO.
R140	159
R141	159
R142	159
R143	159
R144	154
R145	156
R146	164
R147	159
R148	168
R149	168

SYMBOL NO.	INDEX NO.
R150	164
R151	----
R152	159
R153	161
R154	152
R155	159
R156	159
R157	159
R158	160
R159	160

SYMBOL NO.	INDEX NO.
R160	160
R161	160
R162	160
R163	164
R164	164
R165	159
R166	159
R167	164
R168	164
R169	164

# 11. Main Control Board (A593)

## RESISTOR

SYMBOL NO.	INDEX NO.
R170	164
R171	164
R172	164
R173	164
R174	151
R175	154
R176	165
R177	170
R178	167
R179	164

SYMBOL NO.	INDEX NO.
R180	152
R181	164
R182	164
R183	164
R184	164
R185	164
R186	159
R187	159
R188	160
R189	160

SYMBOL NO.	INDEX NO.
R190	164
R191	164
R192	164
R193	164
R194	164
R195	164
R196	164
R197	164
R198	164
R199	164

SYMBOL NO.	INDEX NO.
R200	164
R201	164
R202	164
R203	164
R204	164
R205	164
R206	164
R207	164
R208	164
R209	164

SYMBOL NO.	INDEX NO.
R210	164
R211	164
R212	164
R213	164
R214	164
R215	164
R216	152
R217	152
R218	164
R219	158

SYMBOL NO.	INDEX NO.
R220	164
R221	164
R222	164
R223	160
R224	171
R225	150
R226	150
R227	156
R228	164
R229	164

SYMBOL NO.	INDEX NO.
R230	164
R231	156
R232	164
R233	164
R234	164
R235	151
R236	151
R237	164
R238	151
R239	151

SYMBOL NO.	INDEX NO.
R240	164
R241	164
R242	150
R243	155
R244	167
R245	166
R246	164
R247	164
R248	164
R249	164

SYMBOL NO.	INDEX NO.
R250	151
R251	151
R252	151
R253	151
R254	151
R255	151
R256	151
R257	151
R258	151
R259	151

SYMBOL NO.	INDEX NO.
R260	153
R261	164
R262	164
R263	163
R264	155
R265	167
R266	166
R267	164
R268	164
R269	164

SYMBOL NO.	INDEX NO.
R270	164
R271	151
R272	151
R273	151
R274	151
R275	151
R276	151
R277	151
R278	151
R279	151

SYMBOL NO.	INDEX NO.
R280	151
R281	164
R282	150
R283	164
R284	152
R285	152

## SW

SYMBOL NO.	INDEX NO.
SW100	115
SW101	115

## TP

SYMBOL NO.	INDEX NO.
TP100	101
TP101	101
TP102	101

## ZD

SYMBOL NO.	INDEX NO.
ZD100	123

## 11. Main Control Board (A593)

Index No.	Part No.	Description	Q'ty Per Assembly
*	A593 5510	Main Control Board	1
1	A377 5150	IC - TC11DG03AF-0071	1
1	1104 0588	Dip Socket - 28p	
2	A593 5130	IC - UVEPROM-256X8 150NS	1

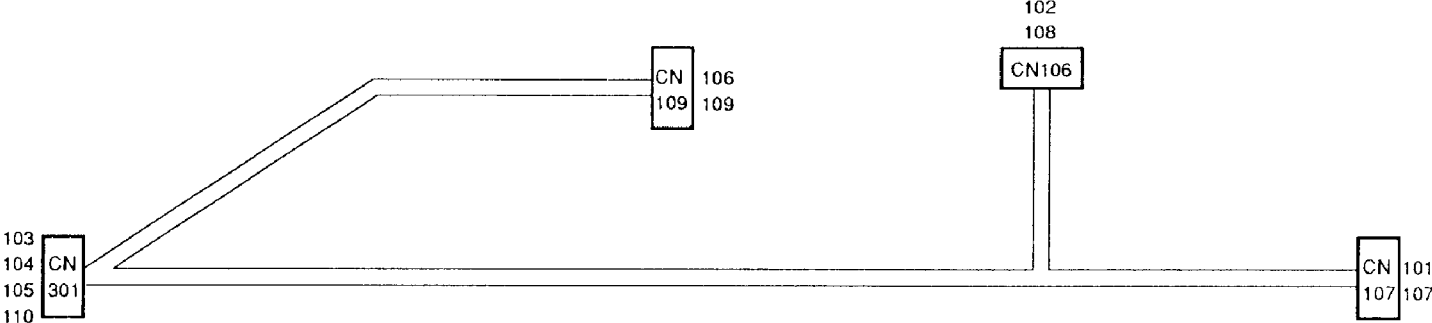


Index No.	Part No.	Description	Q'ty Per Assembly
101	1101 0328	Connector Pin Contact	
102	1102 0960	Connector - 4p	
103	1102 1048	Pin Housing - Mate-N-Lock - 3p	
104	1102 4212	CT Header - 15p	
105	1102 4497	Connector - 13p	
106	1102 5305	Connector - 6p	
107	1102 5718	Optical Fiber Connector	
108	1103 0641	Connector - 13p	
109	1103 0773	Connector - 8p	
110	1103 1773	Pin Header - 7p	
111	1103 1776	Pin Header - 10p	
112	1103 1780	Connector - 14p	
113	1104 0333	Fuse Holder	
114	1107 0752	Fuse - 5A 250V	
115	1204 1385	Push Switch	
116	1204 1422	Dip Switch - 51D-0401	
117	1400 0284	Transistor - 2SD789D	
118	1400 0454	Transistor - 2SB710A	
119	1400 0678	Transistor - FC112	
120	1401 0200	Transistor - 2SD633	
121	1401 0282	Transistor - 2SB1020	
122	1401 0305	Transistor - 2SA684R	
123	1402 0642	Zener Diode - RD8.2M-B1	
124	1402 0874	Diode - RL2Z	
125	1402 1027	Diode - 1N4002	
126	1403 0519	Photocoupler - TIP621	
127	1407 1314	IC - HD74LS74AFP	
128	1407 1882	TTLIC - SN74LS373NS	
129	1407 2218	TTLIC - SN74LS06NS	
130	1407 2231	IC - TD62308AF	
131	1407 3202	IC - 74HC00A	
132	1407 3286	IC - TMP82C55AM-10	
133	1407 3336	IC - TC74HC04AF	
134	1407 3492	CPU -78C10AGF	
135	1407 3756	Timer - TMP82C54M-2	

Index No.	Part No.	Description	Q'ty Per Assembly
136	1407 3965	IC - DS1267 - 50	
137	1408 0397	Comparator - NJM2901M	
138	1408 0538	IC - SI8301L	
139	1408 0598	IC - MB3773PF	
140	1408 0599	IC - M51971EP	
141	1408 0827	IC - TA8429H	
142	1408 1050	IC - STK6712BMK4	
143	1408 1200	IC - STK681-050	
144	1503 0347	Oscillator - 12Mhz	
145	1503 0512	Oscillator - 3Mhz	
146	1605 0339	Capacitor - 0.33 $\mu$ F - +80-20%	
147	1606 1348	Capacitor - 0.022 $\mu$ F 50V	
148	1611 8101	Resistor - 100 $\Omega$ 1/4W $\pm$ 5%	
149	1611 9102	Resistor - 1K $\Omega$ 1/2W $\pm$ 5%	
150	1630 3101	Resistor - 100 $\Omega$ - 1/10W	
151	1630 3102	Resistor - 1K $\Omega$ 1/10W $\pm$ 5%	
152	1630 3103	Resistor - 10K $\Omega$ 1/10W $\pm$ 5%	
153	1630 3122	Resistor - 1.2K $\Omega$ 1/10W $\pm$ 5%	
154	1630 3152	Resistor - 1.5k $\Omega$ - 1/10W	
155	1630 3201	Resistor - 200 $\Omega$ 1/10W $\pm$ 5%	
156	1630 3202	Resistor - 2K $\Omega$ -1/10W	
157	1630 3204	Resistor - 200K $\Omega$ 1/10W $\pm$ 5%	
158	1630 3222	Resistor - 2.2K $\Omega$ 1/10W $\pm$ 5%	
159	1630 3223	Resistor - 22k $\Omega$ - 1/10W	
160	1630 3302	Resistor - 3k $\Omega$ - 1/10W	
161	1630 3333	Resistor - 33K $\Omega$ $\pm$ 5% 1/10W	
162	1630 3362	Resistor - 3.6K $\Omega$ $\pm$ 5% 1/10W	
163	1630 3470	Resistor - 47 $\Omega$ 1/10W $\pm$ 5%	
164	1630 3472	Resistor - 4.7K $\Omega$ 1/10W $\pm$ 5%	
165	1630 3473	Resistor - 47K $\Omega$ 1/10W $\pm$ 5%	
166	1630 3511	Resistor - 510 $\Omega$ 1/10W $\pm$ 5%	
167	1630 3562	Resistor - 5.6K $\Omega$ $\pm$ 5% 1/10W	
168	1630 3623	Resistor - 62k $\Omega$ 1/10w $\pm$ 5%	
169	1630 3753	Resistor - 75k $\Omega$ - 1/10W	

Index No.	Part No.	Description	Q'ty Per Assembly
170	1630 3822	Resistor - 8.2K $\Omega$ 1/10W $\pm$ 5%	
171	1633 0000	Resistor - 0 $\Omega$ $\pm$ 1% 1/10W	
172	1640 0331	Capacitor - 330 $\mu$ F 10V $\pm$ 20%	
173	1640 5100	Capacitor - 10MICROF $\pm$ 20% 50V	
174	1640 5101	Capacitor - 100 $\mu$ F $\pm$ 20% 50V	
175	1640 5109	Capacitor - 1 $\mu$ F - $\pm$ 20% - 50V	
176	1640 5339	Capacitor - 3.3 $\mu$ F - $\pm$ 20% - 50V	
177	1660 3102	Capacitor - 1000PF $\pm$ 5% 50V	
178	1660 5103	Capacitor - 10000PF $\pm$ 10% 50V	
179	1660 7104	Capacitor - 100000PF 50V	

12. Stapler Harness (A593)



## 12. Stapler Harness (A593)

Index No.	Part No.	Description	Q'ty Per Assembly
*	A593 5200	Main Harness	1

Index No.	Part No.	Description	Q'ty Per Assembly
101	1100 1247	Terminal	
102	1100 1329	Contact	
103	1100 1340	Terminal	
104	1100 1343	Pin Contact	
105	1100 1344	Pin Contact	
106	1100 1499	Connector - 1P	
107	1102 1849	Connector - 6P	
108	1102 1993	Socket Housing - 13P	
109	1102 4134	Connector - 18P	
110	1102 4404	Connector - 32P	



# 13. Decal and Document (A593)

<p><b>1</b></p> <p><b>How to Set Originals When in Finisher Mode</b></p> <p>Set Originals face down in a RDH. The arrow indicates the position where the copies will be stapled.</p> <p>Stapled copies      Position of originals in RDH</p> <p>NOTE</p>	<p><b>2</b></p> <p><b>How to Set Computer form Originals</b></p>	<p><b>4</b></p>	<p><b>9</b></p>
<p><b>3</b></p> <p><b>Removing Misted Paper</b></p> <p>If R1 is lit or blinking.</p> <p>If R2 is lit or blinking.</p> <p>If R3 is lit or blinking.</p> <p>If R4 is lit or blinking.</p> <p><b>Loading Staples</b></p>	<p><b>5</b></p>	<p><b>6</b></p>	<p><b>7</b></p>
			<p><b>11</b></p> <p>During machine operation, to reduce the risk of injury avoid touching moving parts at the finisher exit section.</p> <p>Open the finisher front door to de-energize the moving parts.</p>

### 13. Decal and Document (A593)

Index No.	Part No.	Description	Q'ty Per Assembly
1	A353 4995	Decal - Staple Position	1
2	A593 4981	Decal - Set Cff	1
3	A593 4917	Decal - Misfeed Removal	1
4	A353 4604	Decal - R	1
5	A353 2245	Guide Plate Seal	1
6	A353 2265	Decal - R1	1
7	A353 2275	Decal - R2	1
9	A353 2246	Decal - R3	1
11	A353 4975	Decal - Exit	1

Index No.	Part No.	Description	Q'ty Per Assembly

# **PARTS INDEX**

Part No.	Description	Page and Index No.
A593 2910	Exit Guide bracket	9- 32
A593 2911	Stapler Slide Bracket	15- 16
A593 2914	Stapler Bracket	15- 17
A593 2915	Slide Endfence Lever	15- 21
A593 2916	Stapler Cover	15- 20
A593 4917	Decal - Misfeed Removal	5- 18
A593 4917	Decal - Misfeed Removal	31- 3
A593 4981	Decal - Set CFF	5- 20
A593 4981	Decal - Set Cff	31- 2
A593 5130	IC - UVEPROM-256X8 150NS	27- 2
A593 5200	Main Harness	23- 19
A593 5200	Main Harness	29- *
A593 5210	Stapler Tray Harness	13- 7
A593 5216	Exit Sensor Harness	13- 49
A593 5240	Solenoid Relay Harness	23- 3
A593 5256	Joger Sensor Harness	9- 7
A593 5257	Shift Sensor Harness	19- 17
A593 5260	Relay Harness	15- 6
A593 5300	Stapler Harness	15- 8
A593 5510	Main Control Board	23- 24
A593 5510	Main Control Board	27- *

Part No.	Description	Page and Index No
AA04 3028	Timing Belt - 852P3M6	11- 14
AA04 3054	Timing Belt - 142 P2M4	21- 11
AA04 3058	Timing Belt - 588PX	7- 25
AA04 3104	Timing Belt - 219 P3M4	13- 3
AA04 3130	Timing Belt - 360T	21- 7
AA04 3179	Timing Belt - 1182P2M4	15- 13
AA04 3180	Timing Belt - B60S3M564	11- 17
AA04 3181	Timing Belt - B40S2M80	19- 8
AA04 3182	Timing Belt - 180P2M6	17- 7
AA06 0092	Release Spring	17- 8
AA13 2024	Spacer - M6	19- 36
AA14 3215	Screw - M5x6	7- 12
AA14 3215	Screw - M5x6	9- 25
AB01 0055	Gear - 46Z/13Z	13- 41
AB01 0083	Gear - 62Z	17- 12
AB01 1085	Gear - 14Z/31Z	15- 1
AB01 1141	Gear - 14Z	15- 4
AB01 3708	Gear - 18Z	21- 29
AB01 3709	Worm Gear	21- 17
AB01 3710	Gear - 40Z	21- 15
AB01 3711	Worm Gear - 44Z	21- 13
AB01 3712	Gear - 52Z	21- 19
AB03 0030	Pulley - 17Z	13- 40
AB03 0223	Pulley - 48Z	21- 10
AB03 0227	Pulley - 32Z	13- 30
AB03 0227	Pulley - 32Z	15- 33
AB03 0229	Timing Pulley - 20Z	13- 37
AB03 0372	Timing Pulley - 20Z	23- 14
AB03 0373	Timing Pulley - 22Z	11- 16
AB03 0374	Timing Pulley - 20Z	7- 20
AB03 0374	Timing Pulley - 20Z	11- 10
AB03 0375	Timing Pulley - 30Z	21- 20
AB03 0376	Timing Pulley - 30Z	21- 8
AB03 0377	Timing Pulley - T28	19- 7

Part No.	Description	Page and Index No.
AB03 0378	Timing Pulley - 20Z	19- 33
AB03 0379	Timing Pulley - T30	19- 22
AB03 0380	Timing Pulley - 15Z	17- 11
AB03 0381	Timing Pulley - 26Z	19- 37
AB03 0382	Timing Pulley - 24Z	13- 5
AB03 3028	Pulley - 32Z/31Z	15- 3
AB03 3043	Timing Pulley - 44/18Z	11- 12
AG07 0004	Magnetic Catch	7- 6
AG07 0004	Magnetic Catch	23- 1
AH01 2010	Caster - 50m	23- 27
AJ01 1010	Stapler - EH-560	15- 19
AW01 0025	Photosensor	9- 27
AW02 0006	Photointerruptor - EE-SX460-P2	17- 41
AW02 0012	Photointerruptor	21- 6
AW02 0021	Photointerruptor	17- 20
AW02 0041	Photointerruptor	13- 43
AW02 0041	Photointerruptor	15- 35
AW02 0049	Photointerruptor - OS - 580213-703	13- 14
AW02 0049	Photointerruptor - OS - 580213-703	19- 16
AW03 0023	Optical Fiber	23- 25
AX05 0055	DC Motor - DC 9W	17- 4
AX05 0055	DC Motor - DC 9W	19- 15
AX05 0058	DC Motor - 24V 9W	21- 16
AX06 0065	Motor - DC 29W	23- 12
AX06 0066	Stepping Motor - DC 4W	13- 4
AX06 0066	Stepping Motor - DC 4W	15- 5
AX12 0027	Solenoid - DC 24V	7- 16
C101 1327	Timing Belt - PX146P2M	19- 34
H002 2225	Bushing - Lock Release	11- 27

Part No.	Description	Page and Index No.
A010 5700	Sensor	9- 23
A010 5700	Sensor	13- 46
A010 5700	Sensor	17- 39
A017 2988	Ring	11- 19
A028 7479	Antistatic Brush	9- 16
A300 2133	Guide Roller - A	21- 28
A300 2134	Guide Roller - B	19- 28
A300 2726	Worm Gear Shaft	21- 18
A300 3153	Safety Switch Bracket	23- 5
A300 3154	Spring Plate	23- 6
A300 3155	Stepped Screw - M25x32	23- 2
A300 3551	Glip Stapler Unit	13- 17
A300 3634	Spring Plate - Timing Belt	15- 12
A300 3812	Spacer - 6x22x1.5	13- 38
A300 3812	Spacer - 6x22x1.5	15- 30
A300 3812	Spacer - 6x22x1.5	15- 34
A300 3813	Shaft - 6x21.5	13- 25
A300 3815	Spring Plate	13- 16
A300 3822	Spacer - 11x15x1	13- 42
A300 3826	Pressure Spring	19- 23
A300 3858	Stepped Screw - M4	11- 18
A351 3143	Bushing EO - 12N 22mm	15- 40
A351 3143	Bushing EO-12N 22mm	23- 8
A351 4211	Anti-vibration Collar	23- 35
A351 4721	Drive Motor Grommet	23- 34
A353 1121	Fixing Plate	23- 21
A353 1142	Idler Shaft	11- 11
A353 1143	Idler Shaft	11- 15
A353 1151	Slide Rail Support Plate	23- 10
A353 1152	Slide Rail	23- 11
A353 1153	Upper Stay	23- 9
A353 1154	Harness Hoider Plate	21- 23
A353 1155	Lower Inner Cover	23- 26
A353 1156	Joint Magnetic Bracket	23- 15

Part No.	Description	Page and Index No.
A353 1157	Joint Connector Bracket	23- 18
A353 1158	Upper Magnetic Bracket	23- 16
A353 1161	Lower Door Bracket	5- 13
A353 1171	Upper Door Bracket	5- 6
A353 1181	Main Control Board Bracket	23- 22
A353 1192	Bushing - 12x200	23- 32
A353 1601	Transport Drive Bracket	23- 13
A353 1631	Main Tightener	11- 13
A353 1651	Lower Tightener	7- 21
A353 1651	Lower Tightener	11- 21
A353 2101	Transport Roller	7- 8
A353 2101	Transport Roller	9- 1
A353 2110	Brush Roller Ass'y	9- 31
A353 2111	Exit Roller Shaft	9- 21
A353 2112	Exit Roller	9- 26
A353 2115	Paddle Roller	9- 29
A353 2116	Paddle	9- 30
A353 2121	Alignment Brush Roller - Short	9- 20
A353 2122	Alignment Brush Roller - Long	9- 19
A353 2131	Junction Gate	7- 9
A353 2141	Solenoid Lever	7- 23
A353 2146	Solenoid Bracket	7- 24
A353 2147	Junction Gate Spring	7- 13
A353 2151	Positioning Roller Arm	11- 4
A353 2155	Positioning Roller Shaft	11- 1
A353 2156	Positioning roller Bracket	11- 6
A353 2157	Pressure Spring	11- 5
A353 2160	Positioning Roller Solenoid	11- 8
A353 2162	Solenoid Bracket	11- 7
A353 2163	Release Spring	11- 9
A353 2201	Lower Paper Guide Plate	9- 4
A353 2211	Middle Guide Plate	9- 8
A353 2212	Sensor Bracket	9- 6
A353 2221	Upper Guide Plate	7- 11
A353 2223	Front Seat	7- 27

Part No.	Description	Page and Index No.
A353 2224	Rear Seal	7- 10
A353 2231	Exit Turn Guide Plate	7- 15
A353 2232	Paper Guide Sheet	7- 14
A353 2241	Lower Removal Guide - R3	9- 9
A353 2242	Magnetic Release Lever	9- 13
A353 2243	Lever Knob	9- 11
A353 2244	Support Angle	7- 4
A353 2244	Support Angle	9- 14
A353 2245	Guide Plate Seal	5- 4
A353 2245	Guide Plate Seal	9- 10
A353 2245	Guide Plate Seal	31- 5
A353 2246	Decal - R3	23- 4
A353 2246	Decal - R3	31- 9
A353 2251	Exit Removal Guide - R4	9- 17
A353 2252	Pressure Spring Plate	9- 15
A353 2255	Decal - R4	9- 18
A353 2261	Upper Removal Guide - R1	7- 7
A353 2262	Removal Guide Support Plate	7- 2
A353 2265	Decal- R1	7- 5
A353 2265	Decal - R1	31- 6
A353 2271	Upper Removal guide - R2	7- 17
A353 2275	Decal - R2	7- 19
A353 2275	Decal - R2	31- 7
A353 2301	Paper Guide Roller	7- 1
A353 2301	Paper Guide Roller	9- 12
A353 2311	Paper Guide Roller	9- 28
A353 2321	Paper Guide Roller	7- 3
A353 2571	Sensor Cover	13- 18
A353 2601	Staple Unit Side Plate	13- 55
A353 2621	Stapler Motor Bracket	15- 2
A353 2622	Jogger Motor Barcket	13- 6
A353 2636	Sensor Cover	13- 52
A353 2637	Slide Rail Stay	13- 11
A353 2705	Transport Base Plate	13- 24
A353 2711	Front Jogger Fence	13- 34

Part No.	Description	Page and Index No.
A353 2716	Jogger Fence Seal	13- 29
A353 2717	Mylar - 29x29x0.3	13- 48
A353 2721	Rear Jogger Fence	13- 36
A353 2731	Jogger Fence Slider	13- 31
A353 2732	Bushing - 8x10x9.5mm	13- 45
A353 2737	Front Slider Seal	13- 51
A353 2738	Rear Side Seal	13- 53
A353 2741	Guide Rod	13- 19
A353 2741	Guide Rod	13- 32
A353 2751	Idler Bracket	13- 27
A353 2761	Paper Exit Pawl	13- 26
A353 2763	Washer - M5	13- 35
A353 2764	Timing Belt - 2x710	13- 13
A353 2771	Positing Guide Plate	13- 9
A353 2772	Positioning Sensor Bracket	13- 15
A353 2773	Lower Positioning Guide	13- 8
A353 2774	Upper Positioning Guide	13- 10
A353 2781	Front Positioning Fence	13- 50
A353 2782	Positioning Fence Seal	13- 21
A353 2783	Slide Holder	13- 22
A353 2786	Rear Positioning Fence	13- 20
A353 2788	Slide Holder Spring	13- 23
A353 2790	Timing Belt - 1242P2M4	13- 28
A353 2795	Exit Drive Shaft	13- 12
A353 2811	Stapler Guide Rail	15- 27
A353 2812	Guide Rod	15- 10
A353 2813	Stapler HP Sensor Bracket	15- 29
A353 2815	Idler Bracket	15- 28
A353 2817	Harness Cover	15- 31
A353 2821	Belt Clamp	15- 11
A353 2825	Stapler Slide Guide	15- 32
A353 2831	Stapler Slide Holder	15- 9
A353 2832	Grounding Plate	15- 36
A353 2833	Grounding Plate	15- 7
A353 2851	Return Spring	15- 18

Part No.	Description	Page and Index No.
A353 2853	Holder Stay	15- 15
A353 3020	End Fence	19- 25
A353 3113	Pressure Spring	21- 14
A353 3121	Lift Drive Motor Bracket	21- 12
A353 3134	Timing Belt Guide Plate	21- 1
A353 3135	Lift Drive Shaft	21- 9
A353 3136	Spacer - 8x12x14.4	21- 30
A353 3151	Tightener Bracket	21- 22
A353 3161	Lower Sensor Bracket	21- 21
A353 3172	Actuator Bracket	17- 17
A353 3173	Pressure Spring	17- 18
A353 3180	Upper Exit Stay	17- 15
A353 3181	Exit Sensor Bracket	17- 40
A353 3191	Reverse Roller	19- 6
A353 3192	Front Arm	19- 5
A353 3193	Exit Roller Shaft	19- 3
A353 3197	Rear Arm	19- 9
A353 3201	Exit Roller	19- 4
A353 3202	Exit Roller Ring	19- 12
A353 3231	Bushing - 4x6x9mm	19- 32
A353 3245	Shift Tray	5- 7
A353 3251	Shift Tray Holder	21- 26
A353 3252	Plate Bracket	21- 35
A353 3261	Shift Tray Base	21- 27
A353 3271	Tray Shift Shaft	21- 32
A353 3272	Guide Roller	21- 33
A353 3273	Spacer - 6x10x2	21- 34
A353 3281	Front Side Plate	21- 2
A353 3291	Lift guide Roller	13- 47
A353 3291	Lift guide Roller	21- 31
A353 3292	Stopper Plate	21- 4
A353 3301	Rear Side Plate	21- 25
A353 3303	Shift Tray Support	21- 3
A353 3312	Motor Bracket	17- 13
A353 3313	Shift Drive Shaft Holder	17- 9

Part No.	Description	Page and Index No.
A353 3331	Exit Stay	19- 13
A353 3341	Shift Drive Cam	19- 1
A353 3345	Shift Drive Motor Bracket	19- 14
A353 3346	Shift Drive Shaft	19- 35
A353 3347	Shift Sensor Barcket	19- 19
A353 3351	Exit Driven Roller	17- 32
A353 3352	Upper Exit Guide	17- 27
A353 3353	Driven Roller Shaft	17- 31
A353 3354	Driven Roller Holder	17- 25
A353 3361	Exit Guide Bracket	17- 24
A353 3371	Exit Sensor Bracket	17- 26
A353 3372	Release Guide Mylar	17- 30
A353 3373	Antistatic Brush	17- 34
A353 3374	Leaf Spring	17- 29
A353 3375	Upper Guide Support Plate	17- 33
A353 3381	Exit Guide Pulley	17- 2
A353 3391	Motor Bracket	17- 3
A353 3392	Lower Sensor Bracket	17- 5
A353 3401	Driven Roller Bracket	17- 35
A353 3402	Driven Roller Rear Bracket	17- 28
A353 3403	Driven Roller Link	17- 23
A353 3405	Pressure Spring	17- 22
A353 3411	Lower Exit Stay	19- 26
A353 3421	Lower Exit Guide Plate	17- 1
A353 3432	Front Side Plate	19- 2
A353 3433	Shift Tray Guide	19- 21
A353 3442	Rear Side Plate	19- 20
A353 3451	Microswitch Actuator	19- 11
A353 3453	EExit Roller Cover	19- 10
A353 3454	Microswitch Bracket	19- 38
A353 4215	Right Cover	5- 8
A353 4225	Right Upper Cover	5- 3
A353 4235	Front Shift Cover	5- 12
A353 4245	Rear Cover	5- 1
A353 4255	Upper Cover	5- 5

Part No.	Description	Page and Index No.
A353 4265	Front Door	5- 9
A353 4274	Front Tray Cover	21- 5
A353 4284	Rear Tray Cover	21- 24
A353 4311	Safety Switch Actuator	5- 11
A353 4312	Door Catch	5- 23
A353 4600	Relay Guide	5- 22
A353 4601	Relay guide Bracket	5- 17
A353 4602	Lower Relay Guide	5- 16
A353 4603	Upper Relay Guide	5- 15
A353 4604	Decal - R	5- 14
A353 4604	Decal - R	31- 4
A353 4611	Upper Joint Bracket	5- 2
A353 4975	Decal - Exit	5- 21
A353 4975	Decal - Exit	31- 11
A353 4995	Decal - Staple Position	5- 19
A353 4995	Decal - Staple Position	31- 1
A353 5215	Relay Harness - S3	13- 1
A353 5220	Tray Relay Harness	23- 29
A353 5225	Relay Harness - S4	17- 16
A353 5226	Relay Harness - S7	17- 21
A353 5230	Motor Relay Harness	23- 30
A353 5235	Shift Relay Harness	19- 18
A353 5250	Sensor Relay Harness	23- 17
A353 5255	Relay Harness - S1	9- 3
A353 5270	Safety Switch Harness	23- 7
A353 5280	Main Motor Harness	23- 31
A353 5295	I/F Harness	23- 28
A353 5550	Motor Control Board	23- 23
A377 5150	IC - TC11DG03AF-0071	27- 1
A379 1225	Upper Sensor Actuator	17- 19
A409 1195	Exit Drive Shaft	17- 10
A409 1197	Spacer - 10x16x1.6mm	17- 36
A409 1234	Exit Motor - DC 9W	13- 2
A409 1234	Exit Motor - DC 9W	17- 14
A420 3699	Magnet Catch Ass'y	9- 5



Part No.	Description	Page and Index No.
A458 2251	Cushion - Bin Solenoid Lever	7- 18
A458 2251	Cushion - Bin Solenoid Lever	11- 23
A458 3281	Idler Roller	7- 22
A458 3281	Idler Roller	11- 20
A470 1703	Shift Clutch	19- 24
A556 2151	Antistatic Brush	19- 39
5053 0447	Bushing - 6mm	9- 24
5053 0447	Bushing - 6mm	11- 26
5053 0447	Bushing - 6mm	13- 39
5206 2671	Positioning Roller	11- 2
5206 2687	Stud Screw - M3	15- 38
5304 1639	Bushing - 8mm	7- 26
5304 1639	Bushing - 8mm	9- 22
5304 1639	Bushing - 8mm	19- 30
5403 1910	Spring Anchor - Stopper Lever	17- 6
5403 2075	Stepped Screw	5- 10
5403 2075	Stepped Screw	9- 2
5410 1291	Return Lever Pin	17- 37
5410 1291	Return Lever Pin	19- 31
5442 2117	Shoulder Screw - Hinge	11- 22
5442 2117	Shoulder Screw - Hinge	17- 38
5442 2117	Shoulder Screw - Hinge	19- 27
5446 1687	Lower Roller - Scanner Guide	15- 37
5447 2681	Snap Ring	11- 24
5875 2088	Shoulder Screw - M4	13- 44
5875 2088	Shoulder Screw - M4	19- 29
5919 2127	Positioning Roller Pulley	11- 25
5919 2132	Positioning Roller Belt	11- 3

Part No.	Description	Page and Index No.
0242 0040Z	Pan Head Screw - M2x4	13-117
0313 0040B	Philips Pan Head Screw - M3x4	7-107
0313 0040B	Philips Pan Head Screw - M3x4	9-111
0313 0040B	Philips Pan Head Screw - M3x4	11-107
0313 0040B	Philips Pan Head Screw - M3x4	13-105
0313 0040B	Philips Pan Head Screw - M3x4	15-110
0313 0040B	Philips Pan Head Screw - M3x4	17-109
0313 0040B	Philips Pan Head Screw - M3x4	19-110
0313 0040B	Philips Pan Head Screw - M3x4	21-107
0313 0040B	Philips Pan Head Screw - M3x4	23-118
0313 0050B	Philips Pan Head Screw - M3x5	17-106
0313 0060B	Philips Pan Head Screw - M3x6	9-107
0313 0060B	Philips Pan Head Screw - M3x6	13-114
0313 0100B	Philips Pan Head Screw - M3x10	9-104
0313 0100B	Philips Pan Head Screw - M3x10	13-115
0313 0100B	Philips Pan Head Screw - M3x10	17-111
0313 0100B	Philips Pan Head Screw - M3x10	21-111
0313 0120B	Philips Pan Head Screw - M3x12	19-112
0314 0040B	Philips Pan Head Screw - M4x4	7-109
0314 0040B	Philips Pan Head Screw - M4x4	13-109
0314 0100B	Philips Pan Head Screw - M4x10	13-106
0314 0100B	Philips Pan Head Screw - M4x10	15-108
0315 0080B	Philips Pan Head Screw - M5x8	23-101
0324 0120B	Philips Sunk Screw - M4x12	23-117
0344 0060F	Philips Truss Head Screw - M4x6	5-102
0344 0060F	Philips Truss Head Screw - M4x6	13-108
0344 0060F	Philips Truss Head Screw - M4x6	15-101
0344 0060F	Philips Truss Head Screw - M4x6	21-102
0344 0060F	Philips Truss Head Screw - M4x6	23-103
0344 0080F	Philips Truss Head Screw - M4x8	5-104
0353 0050B	Philips Truss Head Screw M3x5	7-110
0353 0080B	Screw - M3X8	23-120
0414 0082B	Binding Self Tapping Screw - M4x8	7-108
0414 0082B	Binding Self Tapping Screw - M4x8	9-110
0414 0082B	Binding Self Tapping Screw - M4x8	17-112

Part No.	Description	Page and Index No.
0434 0060B	Philips Tapping Screw - M4x6	5-101
0434 0060B	Philips Tapping Screw - M4x6	7-103
0434 0060B	Philips Tapping Screw - M4x6	9-103
0434 0060B	Philips Tapping Screw - M4x6	11-102
0434 0060B	Philips Tapping Screw - M4x6	13-101
0434 0060B	Philips Tapping Screw - M4x6	15-102
0434 0060B	Philips Tapping Screw - M4x6	17-102
0434 0060B	Philips Tapping Screw - M4x6	19-101
0434 0060B	Philips Tapping Screw - M4x6	21-101
0434 0060B	Philips Tapping Screw - M4x6	23-102
0574 0040E	Hexagon Headless Set Screw - M4x4	13-116
0574 0040E	Hexagon Headless Set Screw - M4x4	15-116
0574 0040E	Hexagon Headless Set Screw - M4x4	23-116
0622 0140E	Spring Hole Pin - 2x14mm	7-106
0632 0080G	Parallel Key - 2x8mm	17-105
0632 0120G	Parallel Pin - 2x12	9-108
0632 0120G	Parallel Pin - 2x12	13-104
0633 0120E	Spring Pin - M3x12	19-109
0633 0120G	Parallel Pin - 3x12	19-108
0633 0140E	Parallel Pin - 3x14	21-109
0710 0020W	Hexagonal Nut - M2	13-118
0720 0030E	Retaining Ring - M3	17-103
0720 0040E	Retaining Ring - M4	7-104
0720 0040E	Retaining Ring - M4	9-106
0720 0040E	Retaining Ring - M4	11-104
0720 0040E	Retaining Ring - M4	13-103
0720 0040E	Retaining Ring - M4	15-107
0720 0040E	Retaining Ring - M4	17-110
0720 0040E	Retaining Ring - M4	19-102
0720 0040E	Retaining Ring - M4	21-106
0720 0060E	Retaining Ring - M6	7-102
0720 0060E	Retaining Ring - M6	9-102
0720 0060E	Retaining Ring - M6	11-105
0720 0060E	Retaining Ring - M6	19-104
0720 0060E	Retaining Ring - M6	21-103

Part No.	Description	Page and Index No.
0740 3905	Bushing 5X13x4mm	15-109
0741 3505	Ball Bearing - 5x10x4	17-107
0741 3506	Ball Bearing - 6x12x4 mm	11-106
0741 3506	Ball Bearing - 6x12x4 mm	21-105
0742 3808	Ball Bearing - 8x16	7-101
0742 3808	Ball Bearing - 8x16	9-101
0742 3808	Ball Bearing - 8x16	19-103
0742 3808	Ball Bearing - 8x16	21-108
0742 3905	Ball Bearing - 5 x 13 x 4 mm	17-104
0805 3145	Ball Bearing - 6x12x4mm	13-102
0807 5056	Washer - 8.1mm	21-104
0951 3005B	Philips Screw With Flat Washer M3x5	9-112
0951 3006B	Philips Screw with Flat Washer - M3x6	15-105
0951 3006B	Philips Screw with Flat Washer - M3x6	19-105
0951 4006B	Philips Screw with Flat Washer - M4x6	5-103
0951 4006B	Philips Screw with Flat Washer - M4x6	7-105
0951 4006B	Philips Screw with Flat Washer - M4x6	9-109
0951 4006B	Philips Screw with Flat Washer - M4x6	11-101
0951 4006B	Philips Screw with Flat Washer - M4x6	13-107
0951 4006B	Philips Screw with Flat Washer - M4x6	15-103
0951 4006B	Philips Screw with Flat Washer - M4x6	17-101
0951 4006B	Philips Screw with Flat Washer - M4x6	21-110
0951 4006B	Philips Screw with Flat Washer - M4x6	23-104
0985 3006B	Tapping Screw - M3x6	17-113
1005 0355	Earth Mark	23-109
1100 1247	Terminal	29-101
1100 1329	Contact	29-102
1100 1340	Terminal	29-103
1100 1343	Pin Contact	29-104
1100 1344	Pin Contact	29-105
1100 1499	Connector - 1P	29-106
1101 0328	Connector Pin Contact	27-101
1102 0960	Connector - 4p	27-102
1102 1048	Pin Housing - Mate-N-Lock - 3p	27-103
1102 1849	Connector - 6P	29-107

Part No.	Description	Page and Index No.
1102 1993	Socket Housing - 13P	29-108
1102 4134	Connector - 18P	29-109
1102 4212	CT Header - 15p	27-104
1102 4404	Connector - 32P	29-110
1102 4497	Connector - 13p	27-105
1102 5305	Connector - 6p	27-106
1102 5718	Optical Fiber Connector	27-107
1103 0641	Connector - 13p	27-108
1103 0773	Connector - 8p	27-109
1103 1773	Pin Header - 7p	27-110
1103 1776	Pin Header - 10p	27-111
1103 1780	Connector - 14p	27-112
1104 0333	Fuse Holder	27-113
1104 0588	Dip Socket - 28p	27- 1
1105 0193	Clamp	15-118
1105 0193	Nylon Stud	23-106
1105 0200	Clamp	11-103
1105 0200	Clamp	13-113
1105 0200	Clamp	15-117
1105 0200	Clamp	17-108
1105 0200	Clamp	19-106
1105 0200	Clamp	23-105
1105 0200	Clamp	23-113
1105 0283	Clamp	9-105
1105 0283	Clamp	13-112
1105 0283	Clamp	15-104
1105 0283	Clamp	23-112
1105 0291	Wire Saddle	13-110
1105 0291	Wire Saddle	23-107
1105 0310	Wire Clamp	13-111
1105 0310	Wire Clamp	21-112
1105 0310	Wire Clamp	23-110
1105 0316	Clamp	23-108
1105 0375	Nylon Clamp	15-111
1106 0193	Bushing - 7.9mm	15-106

Part No.	Description	Page and Index No.
1106 0241	Bushing - 6.7mm	23-114
1106 0430	Bushing - 13mm	19-107
1106 0430	Bushing - 13mm	23-111
1107 0752	Fuse - 5A 250V	23-119
1107 0752	Fuse - 5A 250V	27-114
1204 1081	Microswitch	19-111
1204 1385	Push Switch	27-115
1204 1422	Dip Switch - 51D-0401	27-116
1204 2188	Interlock Switch	23-115
1400 0284	Transistor - 2SD789D	27-117
1400 0454	Transistor - 2SB710A	27-118
1400 0678	Transistor - FC112	27-119
1401 0200	Transistor - 2SD633	27-120
1401 0282	Transistor - 2SB1020	27-121
1401 0305	Transistor - 2SA684R	27-122
1402 0642	Zener Diode - RD8.2M-B1	27-123
1402 0874	Diode - RL2Z	27-124
1402 1027	Diode - 1N4002	27-125
1403 0519	Photocoupler - TIP621	27-126
1407 1314	IC - HD74LS74AFP	27-127
1407 1882	TTLIC - SN74LS373NS	27-128
1407 2218	TTLIC - SN74LS06NS	27-129
1407 2231	IC - TD62308AF	27-130
1407 3202	IC - 74HC00A	27-131
1407 3286	IC - TMP82C55AM-10	27-132
1407 3336	IC - TC74HC04AF	27-133
1407 3492	CPU -78C10AGF	27-134
1407 3756	Timer - TMP82C54M-2	27-135
1407 3965	IC - DS1267 - 50	27-136
1408 0397	Comparator - NJM2901M	27-137
1408 0538	IC - SI8301L	27-138
1408 0598	IC - MB3773PF	27-139
1408 0599	IC - M51971EP	27-140
1408 0827	IC - TA8429H	27-141
1408 1050	IC - STK6712BMK4	27-142

Part No.	Description	Page and Index No.
1408 1200	IC - STK681-050	27-143
1503 0347	Oscillator - 12Mhz	27-144
1503 0512	Oscillator - 3Mhz	27-145
1605 0339	Capacitor - 0.33 $\mu$ F - +80-20%	27-146
1606 1348	Capacitor - 0.022 $\mu$ F 50V	27-147
1611 8101	Resistor - 100 $\Omega$ 1/4W $\pm$ 5%	27-148
1611 9102	Resistor - 1K $\Omega$ 1/2W $\pm$ 5%	27-149
1630 3101	Resistor - 100 $\Omega$ - 1/10W	27-150
1630 3102	Resistor - 1K $\Omega$ 1/10W $\pm$ 5%	27-151
1630 3103	Resistor - 10K $\Omega$ 1/10W $\pm$ 5%	27-152
1630 3122	Resistor - 1.2K $\Omega$ 1/10W $\pm$ 5%	27-153
1630 3152	Resistor - 1.5k $\Omega$ - 1/10W	27-154
1630 3201	Resistor - 200 $\Omega$ 1/10W $\pm$ 5%	27-155
1630 3202	Resistor - 2K $\Omega$ -1/10W	27-156
1630 3204	Resistor - 200K $\Omega$ 1/10W $\pm$ 5%	27-157
1630 3222	Resistor - 2.2K $\Omega$ 1/10W $\pm$ 5%	27-158
1630 3223	Resistor - 22k $\Omega$ - 1/10W	27-159
1630 3302	Resistor - 3k $\Omega$ - 1/10W	27-160
1630 3333	Resistor - 33K $\Omega$ $\pm$ 5% 1/10W	27-161
1630 3362	Resistor - 3.6K $\Omega$ $\pm$ 5% 1/10W	27-162
1630 3470	Resistor - 47 $\Omega$ 1/10W $\pm$ 5%	27-163
1630 3472	Resistor - 4.7K $\Omega$ 1/10W $\pm$ 5%	27-164
1630 3473	Resistor - 47K $\Omega$ 1/10W $\pm$ 5%	27-165
1630 3511	Resistor - 510 $\Omega$ 1/10W $\pm$ 5%	27-166
1630 3562	Resistor - 5.6K $\Omega$ $\pm$ 5% 1/10W	27-167
1630 3623	Resistor - 62k $\Omega$ 1/10w $\pm$ 5%	27-168
1630 3753	Resistor - 75k $\Omega$ - 1/10W	27-169
1630 3822	Resistor - 8.2K $\Omega$ 1/10W $\pm$ 5%	27-170
1633 0000	Resistor - 0 $\Omega$ $\pm$ 1% 1/10W	27-171
1640 0331	Capacitor - 330 $\mu$ F 10V $\pm$ 20%	27-172
1640 5100	Capacitor - 10MICROF $\pm$ 20% 50V	27-173
1640 5101	Capacitor - 100 $\mu$ F $\pm$ 20% 50V	27-174
1640 5109	Capacitor - 1 $\mu$ F - $\pm$ 20% - 50V	27-175

Part No.	Description	Page and Index No
1640 5339	Capacitor - 3.3 $\mu$ F - $\pm$ 20% - 50V	27-176
1660 3102	Capacitor - 1000PF $\pm$ 5% 50V	27-177
1660 5103	Capacitor - 10000PF $\pm$ 10% 50V	27-178
1660 7104	Capacitor - 100000PF 50V	27-179